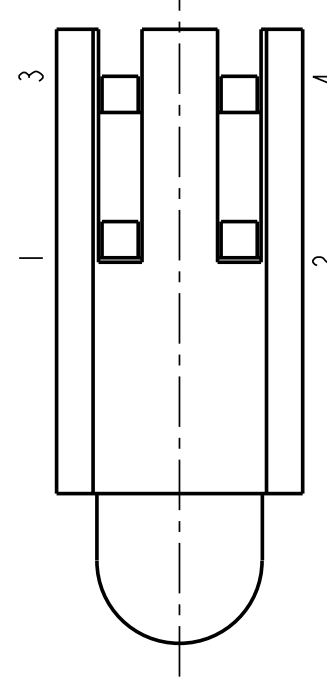
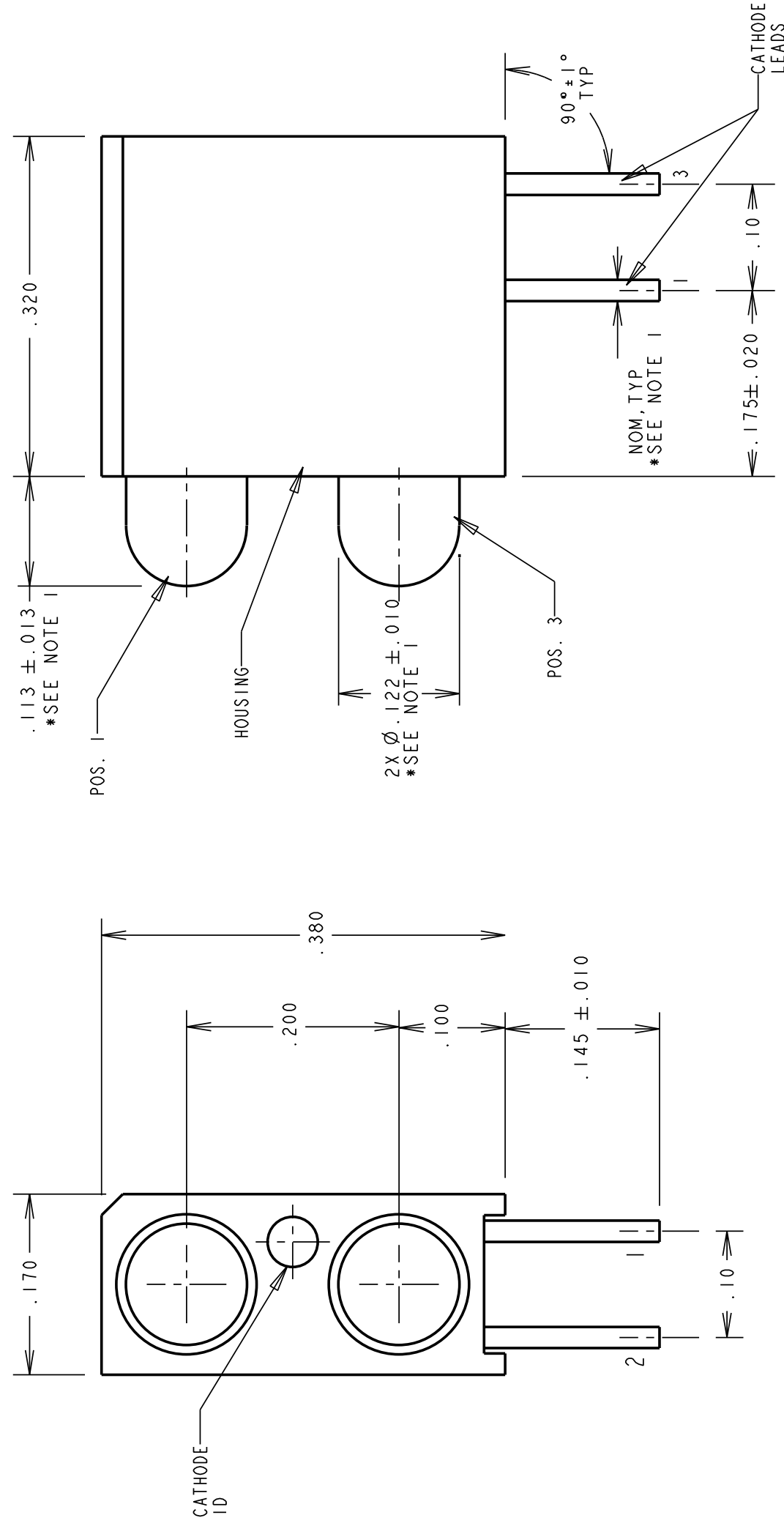
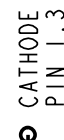


REV	ECN NO	REVISIONS	DRN	CKD	APP	DATE
A		NEW RELEASE	LR	--	N.O.	4-20-95
B		ADDED P/N 553-0188, NOTE 2, LED SPECS & "ATTENTION" NOTE	TC		N.O.	10-18-99
C		ADDED BOTTOM VIEW WITH PIN DESIGNATION AND SCHEMATIC.	TC		N.O.	5-18-99
D		REVISED 5V RED, GREEN AND YELLOW LED SPECS.	TC		N.O.	9-18-00
E		REVISED 2mA RED, GREEN AND YELLOW LED FORWARD VOLTAGE TYP. SPECS., AND RED LUMINOUS INTENSITY TYP. SPEC. ADDED NOTE 3 AND TITLE.	DC		KD	N.O. 2-19-01
F		ADDED P/N 553-0108, 553-0118, 553-0128, 553-0230 & ESD LOGO	JMC	N.O.	MES	3-10-04
G		ADDED P/N 553-0182	JMC	N.O.	Y.C.	11-1-04
H		REV LETTER "G" IN REVISION TABLE WAS "F"	TWC			



ANODE
PIN 2,4



CATHODE
PIN 1,3

SINGLE COLOR LED SCHEMATIC

RECOMMENDED PC BOARD
HOLE PATTERN

NOTE:

- * DENOTES PARTS WITH LED PROTRUSION OF .103 ± .013, WITH LEADS .018 SQ. NOM., LED BODY Ø.115 ± .010 AND THE PC BOARD RECOMMENDED HOLE SIZE IS Ø.040 ± .002.
- DIALIGHT PART NUMBER: 553-0XXX
- PIN NUMBER FOR REFERENCE ONLY, DESIGNATION NON-EXISTENT ON PARTS.



*** ATTENTION:**
OBSERVE PRECAUTIONS FOR
HANDLING ELECTROSTATIC
SENSITIVE DEVICES

SCALE	DRAWING SCALE	DRAWING NUMBER	REV
ALL DIM'S IN: INCHES (MM)		C-15967	H
TOLERANCES:	UNLESS OTHERWISE SPECIFIED	TITLE	MATERIAL
FRACTIONS: ±1/64		3mm LED BI-LEVEL CBI	
DECIMALS (.XX): ±.02			
DECIMALS (.XXX): ±.015			
DECIMALS (.XXXX): ±.0005			
ANGLES: ±1°			
FINISH:			
FSCM	83330		
SHEET	1	OF	1
FAMILY TABLES:			
Dialight			
1501 ROUTE 34 SOUTH FARMINGDALE, NJ 07727			

OPERATING CHARACTERISTICS AT T _A = 25 °C							
SYMBOL	PARAMETER	COLOR	MIN	TYP	MAX	UNITS	TEST COND.
V _F	FORWARD VOLTAGE	RED	1.7	2.2		V	I _F = 2 mA
V _R	REVERSE VOLTAGE	YELLOW	1.8	2.7		V	I _R = 50 μA
V _R	REVERSE VOLTAGE	GREEN	1.9	2.2		V	I _R = 50 μA
λ _{PK}	PEAK WAVELENGTH	ALL	5			nm	MEASURED AT PEAK
λ _{PK}	PEAK WAVELENGTH	RED	635			nm	MEASURED AT PEAK
λ _{PK}	PEAK WAVELENGTH	YELLOW	583			nm	MEASURED AT PEAK
λ _{PK}	PEAK WAVELENGTH	GREEN	565			nm	MEASURED AT PEAK
I _V	LUMINOUS INTENSITY	RED	1.0	1.6		mc d	I _F = 2 mA
I _V	LUMINOUS INTENSITY	YELLOW	1.0	1.6		mc d	I _F = 2 mA
I _V	LUMINOUS INTENSITY	GREEN	1.0	1.6		mc d	I _F = 2 mA

OPERATING CHARACTERISTICS AT T _A = 25 °C							
SYMBOL	PARAMETER	COLOR	MIN	TYP	MAX	UNITS	TEST COND.
V _F	FORWARD VOLTAGE	RED	2.0	3.0		V	I _F = 10 mA
V _F	FORWARD VOLTAGE	YELLOW	2.1	3.0		V	I _F = 10 mA
V _F	FORWARD VOLTAGE	GREEN	2.1	3.0		V	I _F = 10 mA
V _F	FORWARD VOLTAGE	BLUE	3.5	4.2		V	I _F = 10 mA
V _R	REVERSE VOLTAGE	ALL	3			V	I _R = 10 μA
V _R	REVERSE VOLTAGE	RED	650			nm	MEASURED AT PEAK
V _R	REVERSE VOLTAGE	YELLOW	585			nm	MEASURED AT PEAK
V _R	REVERSE VOLTAGE	GREEN	563			nm	MEASURED AT PEAK
V _R	REVERSE VOLTAGE	BLUE	428			nm	MEASURED AT PEAK
I _V	LUMINOUS INTENSITY	RED	3.6	10.0		mc d	I _F = 10 mA
I _V	LUMINOUS INTENSITY	YELLOW	2.2	6.3		mc d	I _F = 10 mA
I _V	LUMINOUS INTENSITY	GREEN	5.6	16.0		mc d	I _F = 10 mA
I _V	LUMINOUS INTENSITY	BLUE	6.3	20		mc d	I _F = 10 mA