

1410186-2 ✓ ACTIVE

MULTIGIG RT | MULTIGIG RT 2

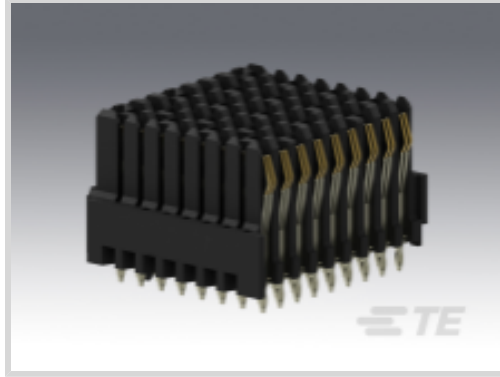
TE Internal #: 1410186-2

MULTIGIG RT 2, High Speed Backplane Connectors, Board-to-Board, 72 Position, Row-to-Row Spacing 1.8 mm [.071 in], Mating Alignment

[View on TE.com >](#)



Connectors > PCB Connectors > Backplane Connectors > High Speed Connectors



Connector System: **Board-to-Board**

Number of Positions: **72**

Row-to-Row Spacing: **1.8 mm [.071 in]**

Mating Alignment: **With**

Mating Alignment Type: **Polarization**

Features

Product Type Features

Applied to Printed Circuit Board Type	Backplane
Connector System	Board-to-Board
PCB Connector Assembly Type	PCB Mount Receptacle
Shroud Style	Unshrouded
Sealable	No
Connector & Contact Terminates To	Printed Circuit Board

Configuration Features

Number of Positions	72
Number of Rows	9
Number of Columns	8
Backplane Architecture	Traditional Backplane
PCB Mount Orientation	Vertical
Guide Location	Left

Contact Features

Contact Current Rating (Max)	1 A
------------------------------	-----

Mechanical Attachment

Mating Alignment	With
------------------	------



Mating Alignment Type	Polarization
-----------------------	--------------

Connector Mounting Type	Board Mount
-------------------------	-------------

Housing Features

Number of Shrouded Sides	0
--------------------------	---

Centerline (Pitch)	1.8 mm [.071 in]
--------------------	------------------

Dimensions

Row-to-Row Spacing	1.8 mm [.071 in]
--------------------	------------------

Usage Conditions

Operating Temperature Range	-55 – 105 °C [-67 – 221 °F]
-----------------------------	-----------------------------

Operation/Application

Circuit Application	Power & Signal
---------------------	----------------

Product Compliance

[For compliance documentation, visit the product page on TE.com>](#)

EU RoHS Directive 2011/65/EU	Compliant
------------------------------	-----------

EU ELV Directive 2000/53/EC	Compliant
-----------------------------	-----------

China RoHS 2 Directive MIIT Order No 32, 2016	No Restricted Materials Above Threshold
---	---

EU REACH Regulation (EC) No. 1907/2006	Current ECHA Candidate List: JUN 2020 (209) Candidate List Declared Against: JAN 2019 (197) Does not contain REACH SVHC
--	---

Halogen Content	Low Halogen - Br, Cl, F, I < 900 ppm per homogenous material. Also BFR/CFR/PVC Free
-----------------	---

Solder Process Capability	Not applicable for solder process capability
---------------------------	--

Product Compliance Disclaimer

This information is provided based on reasonable inquiry of our suppliers and represents our current actual knowledge based on the information they provided. This information is subject to change. The part numbers that TE has identified as EU RoHS compliant have a maximum concentration of 0.1% by weight in homogenous materials for lead, hexavalent chromium, mercury, PBB, PBDE, DBP, BBP, DEHP, DIBP, and 0.01% for cadmium, or qualify for an exemption to these limits as defined in the Annexes of Directive 2011/65/EU (RoHS2). Finished electrical and electronic equipment products will be CE marked as required by Directive 2011/65/EU. Components may not be CE marked. Additionally, the part numbers that TE has identified as EU ELV compliant have a maximum concentration of 0.1% by weight in homogenous materials for lead, hexavalent chromium, and mercury, and 0.01% for cadmium, or qualify for an exemption to these limits as defined in the Annexes of Directive 2000/53/EC (ELV). Regarding the REACH Regulations, TE's information on SVHC in articles for this part number is still based on the European Chemical Agency (ECHA) 'Guidance on requirements for substances in articles' (Version: 2, April 2011), applying the 0.1% weight on weight concentration threshold at the finished product level. TE is aware of the European Court of Justice ruling of September 10th, 2015 also known as O5A (Once An Article Always An Article) stating that, in case of 'complex object', the threshold for a SVHC must be applied to both the product as a whole and simultaneously to each of the articles forming part of its composition. TE has evaluated this ruling

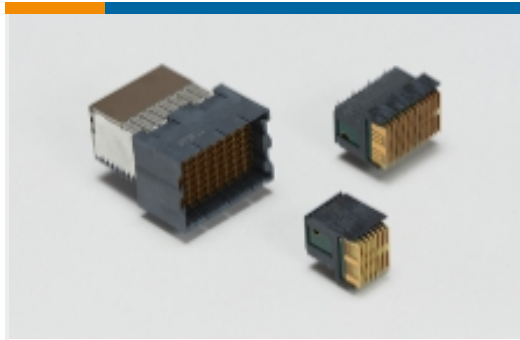
based on the new ECHA "Guidance on requirements for substances in articles" (June 2017, version 4.0) and will be updating its statements accordingly.

Compatible Parts



TE Model / Part # 1410189-3
MULTIGIG RT T2 7RW H-LFT,ET2

Also in the Series | MULTIGIG RT 2



High Speed Backplane Connectors(42)

Customers Also Bought



TE Model / Part #1-6450869-4
V/R 2ACP+1LP+32S+3HDP+1LP+1P



TE Model / Part #1410140-2
MULTIGIG RT T2 .8" BP FULL CNT



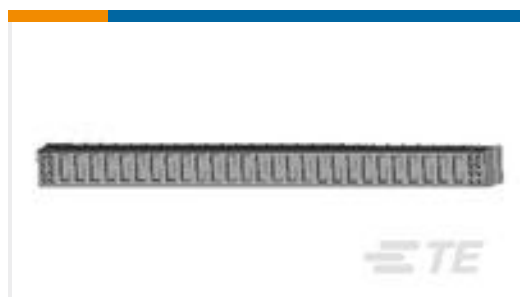
TE Model / Part #1-1469492-8
MULTIGIG RT 9MM GUIDE/ESD 315 DEG



TE Model / Part #2102060-2
Mezalok, Pin, 114 p, 50 Au, LF DEG



TE Model / Part #1-1469491-3
MULTIGIG RT GUIDE PIN, 9MM 4.20



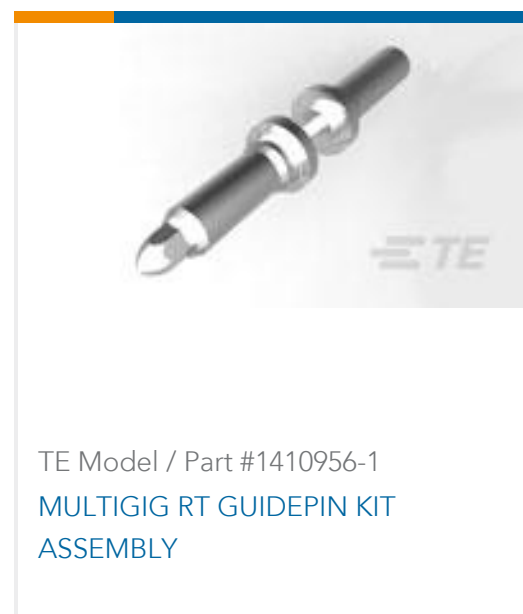
TE Model / Part #1-6450869-0
V/R 2ACP+8S+4ACP+16S+2ACP+12S+2ACP



TE Model / Part #1410189-4
MULTIGIG RT T2 7RW H-LFT,ET2



TE Model / Part #1410142-2
MULTIGIG RT T2 .8" BP FULL RGH



Documents

Product Drawings

MULTIGIG RT T2 .8" BP HALF LEFT

English

CAD Files

3D PDF

3D

Customer View Model

[ENG_CVM_CVM_1410186-2_D.2d_dxf.zip](#)

English

Customer View Model

[ENG_CVM_CVM_1410186-2_D.3d_igs.zip](#)

English

Customer View Model

[ENG_CVM_CVM_1410186-2_D.3d_stp.zip](#)

English

By downloading the CAD file I accept and agree to the [Terms and Conditions](#) of use.

Product Specifications

Application Specification

English

Application Specification

English

Product Environmental Compliance

TE Material Declaration

English