

1-338086-6 ✓ ACTIVE

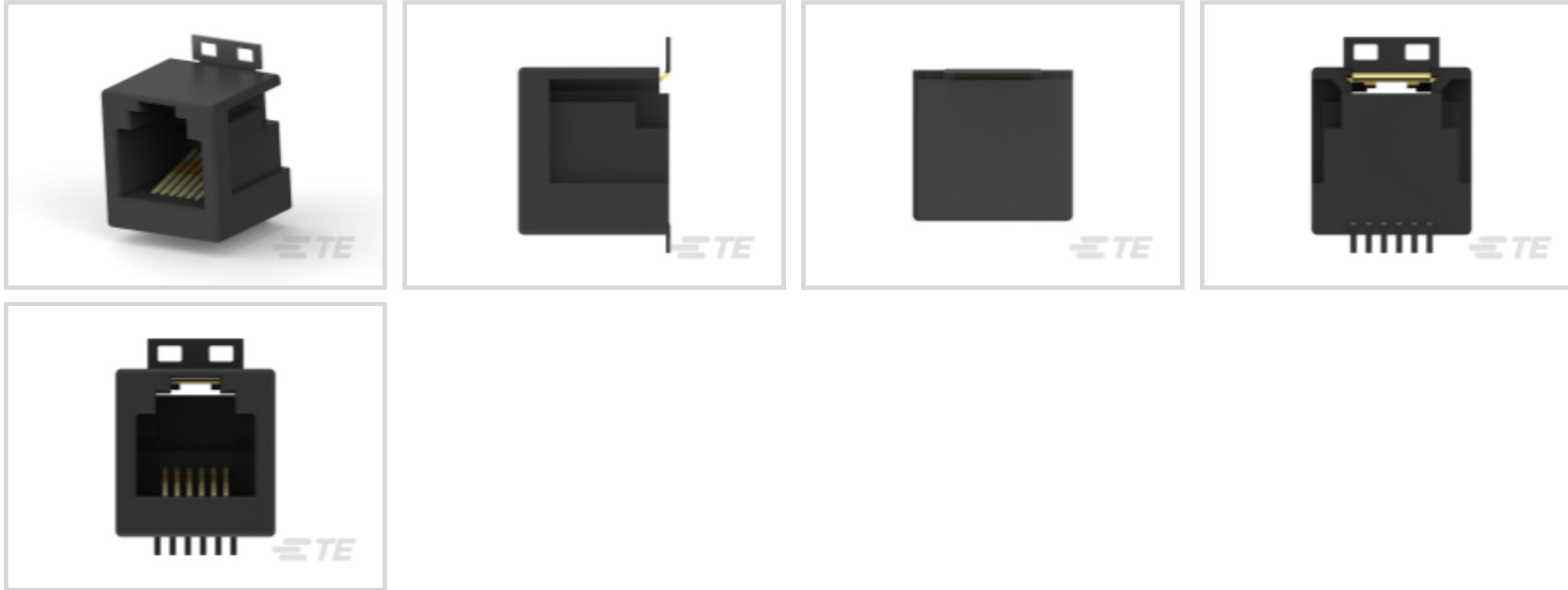
TE Internal #: 1-338086-6

RJ25 Connectors, Single Port, Port Matrix Configuration 1 x 1,
Standard Profile, RJ Type Jacks & Plugs, Standard Connector
Contact Density, Jack

[View on TE.com >](#)



Connectors > Modular Jacks & Plugs > RJ25 Connectors > RJ25 Connectors



Port Configuration: **Single Port**

Port Matrix Configuration: **1 x 1**

Connector Profile: **Standard**

Modular Jacks & Plugs Products: **RJ Type Jacks & Plugs**

Connector Contact Density: **Standard**

[All RJ25 Connectors \(34\)](#)

Features

Product Type Features

Connectors & Connector Components Type	Connector
Modular Jack & Plug Interface Type	RJ25
Connector Product Type	Connector Assembly
Modular Jacks & Plugs Products	RJ Type Jacks & Plugs
Modular Connector Style	Jack
Connector System	Cable-to-Board
Grounding Options	None
Connector & Contact Terminates To	Printed Circuit Board

Configuration Features

Status Indicator Type	None
Port Configuration	Single Port
Port Matrix Configuration	1 x 1
Connector Contact Density	Standard



PCB Mount Orientation	Vertical
Number of Positions	6

Body Features

Connector Profile	Standard
Modular Jack Latch Orientation	Standard - Latch Down

Contact Features

Contact Underplating Material	Nickel
Contact Base Material	Phosphor Bronze
Contact Mating Area Plating Material	Nickel
Contact Current Rating (Max)	1.5 A
PCB Contact Termination Area Plating Material	Tin

Termination Features

Termination Method to Printed Circuit Board	Surface Mount
---	---------------

Mechanical Attachment

Mating Alignment	Without
Connector Mounting Type	Board Mount
Panel Mount Feature	With

Housing Features

Mating Entry Location	Bottom
Housing Color	Black
Housing Material	G.F. PA 9T
Centerline (Pitch)	1.27 mm[.05 in]

Dimensions

Connector Height	12.7 mm[.5 in]
PCB Thickness (Recommended)	1.57 mm[.062 in]

Usage Conditions

Operating Temperature Range	-40 – 70 °C[-40 – 158 °F]
-----------------------------	---------------------------

Operation/Application

Shielded	No
Circuit Application	Signal

Industry Standards

--	--



Performance Category	Cat 3
----------------------	-------

UL Flammability Rating	UL 94V-0
------------------------	----------

Packaging Features

Packaging Method	Tape Mounted on Reel
------------------	----------------------

Packaging Quantity	300
--------------------	-----

Other

Comment	Kapton tape applied to top surface of jack to facilitate vacuum pickup., Surface can be used for application by Type II SMD Machine.
---------	--

Product Compliance

[For compliance documentation, visit the product page on TE.com>](#)

EU RoHS Directive 2011/65/EU	Compliant
------------------------------	-----------

EU ELV Directive 2000/53/EC	Compliant
-----------------------------	-----------

China RoHS 2 Directive MIIT Order No 32, 2016	No Restricted Materials Above Threshold
---	---

EU REACH Regulation (EC) No. 1907/2006	Current ECHA Candidate List: JUN 2020 (209) Candidate List Declared Against: JUN 2020 (209) Does not contain REACH SVHC
--	---

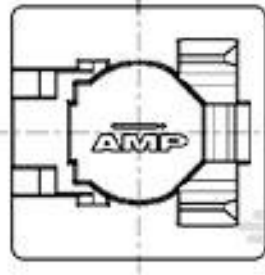
Halogen Content	Low Halogen - Br, Cl, F, I < 900 ppm per homogenous material. Also BFR/CFR/PVC Free
-----------------	---

Solder Process Capability	Reflow solder capable to 260°C
---------------------------	--------------------------------

Product Compliance Disclaimer

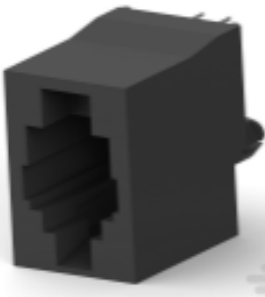
This information is provided based on reasonable inquiry of our suppliers and represents our current actual knowledge based on the information they provided. This information is subject to change. The part numbers that TE has identified as EU RoHS compliant have a maximum concentration of 0.1% by weight in homogenous materials for lead, hexavalent chromium, mercury, PBB, PBDE, DBP, BBP, DEHP, DIBP, and 0.01% for cadmium, or qualify for an exemption to these limits as defined in the Annexes of Directive 2011/65/EU (RoHS2). Finished electrical and electronic equipment products will be CE marked as required by Directive 2011/65/EU. Components may not be CE marked. Additionally, the part numbers that TE has identified as EU ELV compliant have a maximum concentration of 0.1% by weight in homogenous materials for lead, hexavalent chromium, and mercury, and 0.01% for cadmium, or qualify for an exemption to these limits as defined in the Annexes of Directive 2000/53/EC (ELV). Regarding the REACH Regulation, the information TE provides on SVHC in articles for this part number is based on the latest European Chemicals Agency (ECHA) 'Guidance on requirements for substances in articles' posted at this URL: <https://echa.europa.eu/guidance-documents/guidance-on-reach>

Compatible Parts

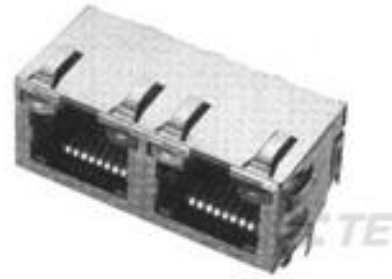


TE Model / Part # 106307-1
6P.COVER/SOLD.STOP

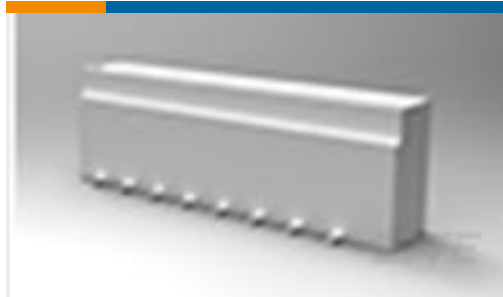
Customers Also Bought



TE Model / Part #1-338084-6
RJ22 Connectors



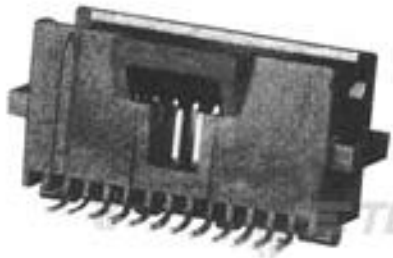
TE Model / Part #2-6116353-8
INV MJ,1X2,PNL GRD,LED (YG/YG)
135ST



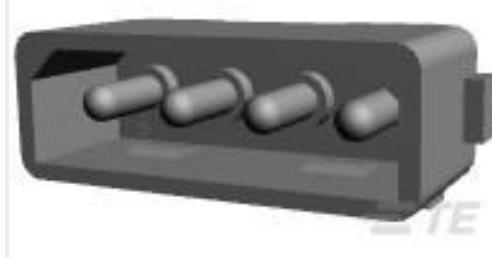
TE Model / Part #2-1735042-6
1MM FFC SMT V ASSY 26P EMBOSS



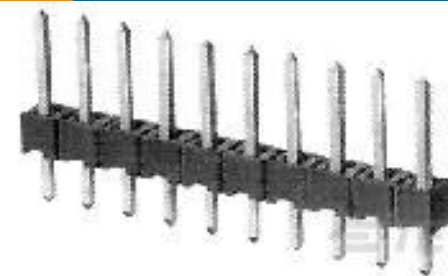
TE Model / Part #487951-6
006 1MM FPC TOP HORZ



TE Model / Part #147377-5
50 SYS50 SMT HDR DR SHD W/O HD



TE Model / Part #794431-1
04P CMNL PIN HDR SN LONG TAIL



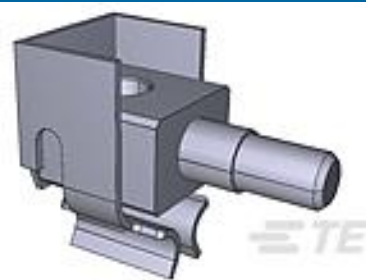
TE Model / Part #102976-6
06 MODII HDR SRST B/A .100CL



TE Model / Part #1932045-1
MBXL VERT HDR 7ACP+24S+1RF



TE Model / Part #2-487951-0
020 1MM FPC TOP HORZ



TE Model / Part #535875-1
AMP TBC PLUS STC DSCHG PWR REC

Documents

Product Drawings

[6/6 INV.MOD.JACK](#)

English

CAD Files

[3D PDF](#)

[3D](#)

[Customer View Model](#)

[ENG_CVM_CVM_1-338086-6_AA.2d_dxf.zip](#)



English

Customer View Model

[ENG_CVM_CVM_1-338086-6_AA.3d_igs.zip](#)

English

Customer View Model

[ENG_CVM_CVM_1-338086-6_AA.3d_stp.zip](#)

English

By downloading the CAD file I accept and agree to the [Terms and Conditions](#) of use.

Datasheets & Catalog Pages

[1-1773464-9_MODULAR_JACKS_SINGLE_PORT_PCB_MOUNT](#)

English

Product Specifications

[AMP surface mount modular jack](#)

English

[Application Specification](#)

English

Product Environmental Compliance

[TE Material Declaration](#)

English

Agency Approvals

[UL Report](#)

English