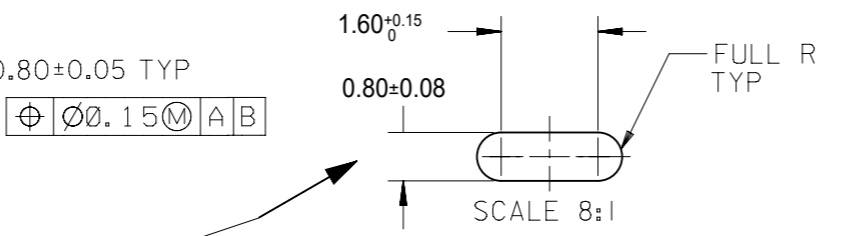
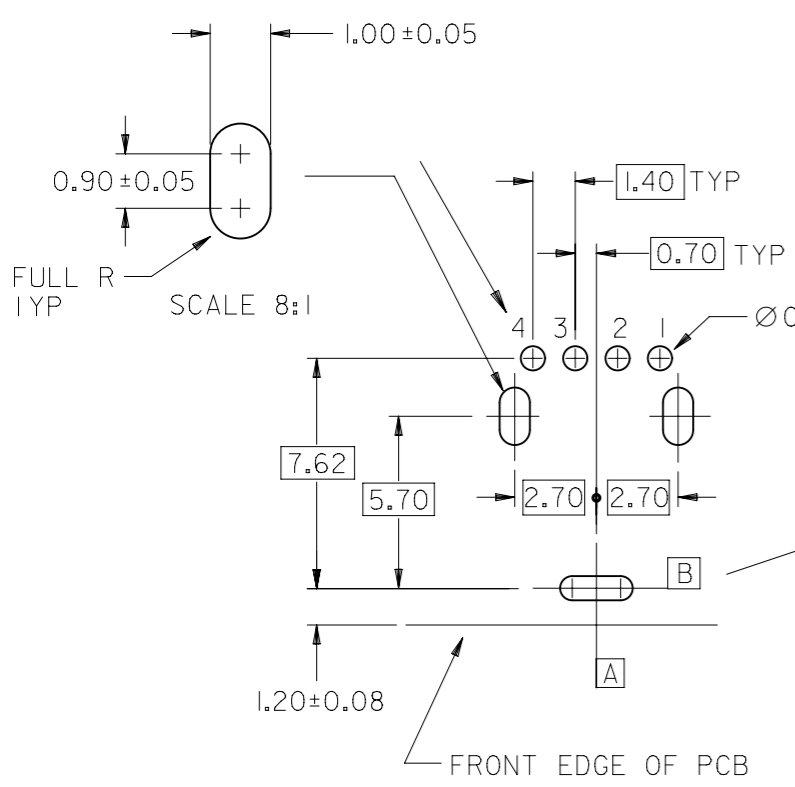
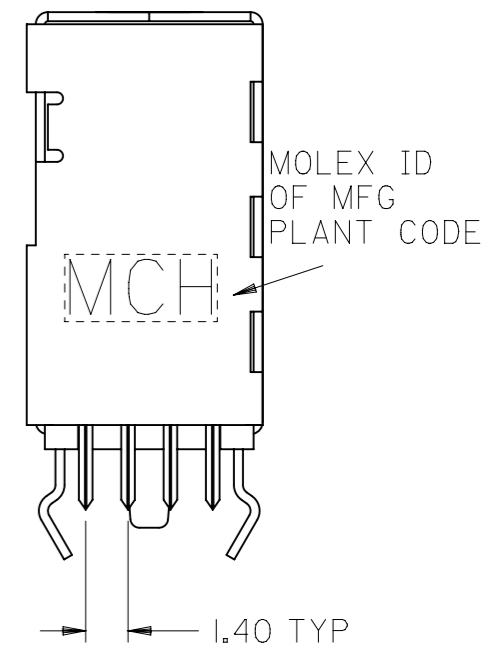
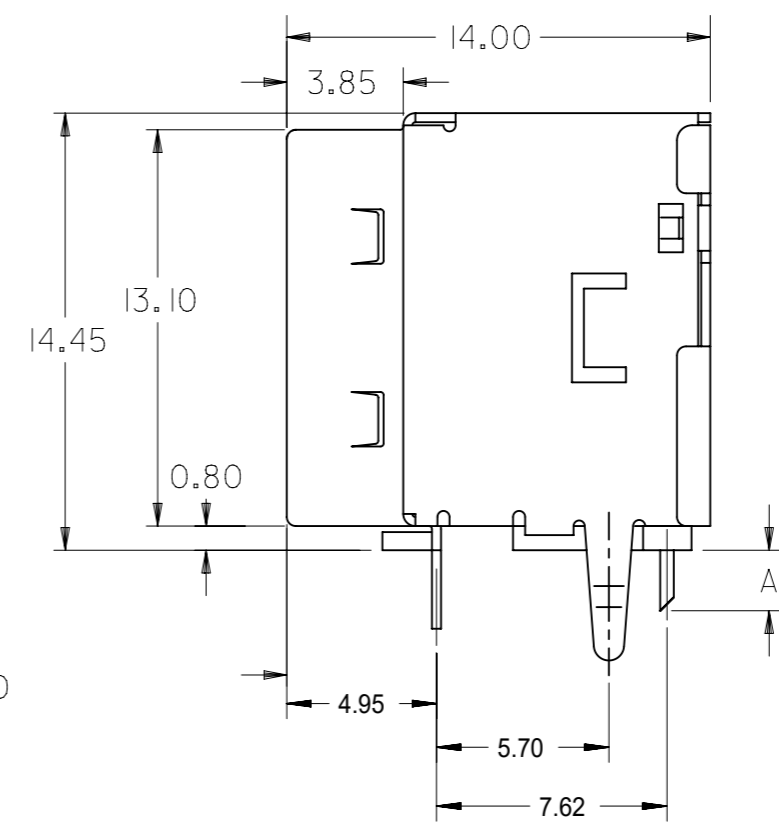
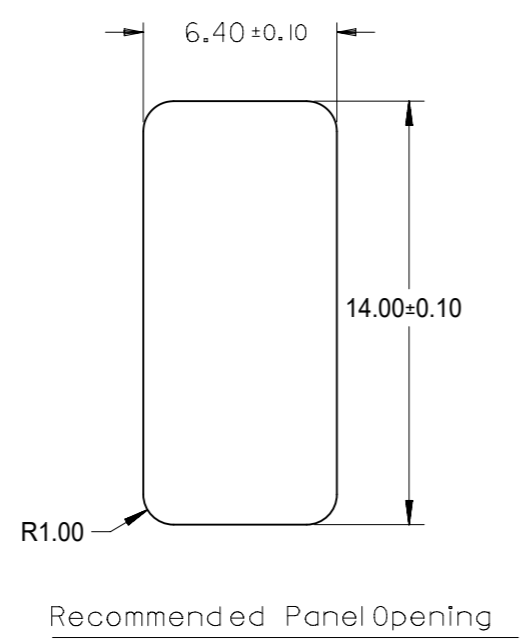
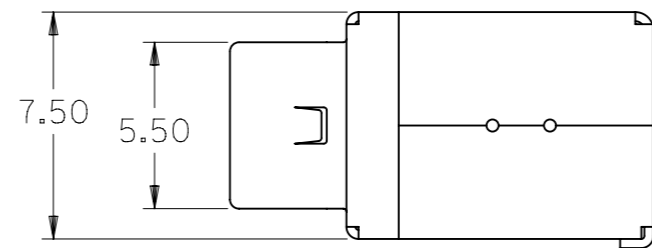


NOTE:

- 1.MATERIAL:
HOUSING:HIGH TEMPERATURE NYLON,GLASS FIBRE FILLED,UL94-V0,COLOR:BLACK
TERMINAL:PHOSPHOR BRONZE
METAL SHELL:DEEP DRAWN STEEL
- 2.PLATING:
TERMINAL:
(a)GLOD FIASH ON THE CONTACT AREA,AND 75MICROINCH MINIMUM PURE TIN ON SOLDER TAIL, UNDER 50MICROINCH MINIMUM Ni PLATE.
(b)30MICROINCH MINIMUM GOLD(Au) ON THE CONTACT AREA, AND 75MICROINCH MINIMUM PURE TIN ON SOLDER TAIL,UNDER 50MICROINCH MINIMUM Ni UNDER PLATE.
(c)GOLD FIASH ON THE CONTACT AREA,AND 75MICROINCH MINIMUM MATTE TIN ON SOLDER TAIL,UNDER 50MICROINCH MINIMUM Ni PLATE.
- METAL SHELL:
(d)100MICROINCH MINIMUM BRIGHT TIN ON THE METAL SHELL,AND 50MICROINCH MINIMUM Ni AND 100MICROINCH MINIMUM Cu PLATE.
(e)100MICROINCH MINIMUM MATTE TIN ON THE METAL SHELL,AND 50MICROINCH MINIMUM Ni AND 100MICROINCH MINIMUM Cu PLATE.
- 3.RECOMMENDED PCB THICKNESS:1.60 ±0.05mm
- 4.PRODUCT SPECIFICATION:REFER TO PS-89485
- 5. TRAY PACKAGING SPECIFICATION REFER TO:PK-89485-002
TUBE PACKAGING SPECIFICATION REFER TO:PK-89485-001



DIMENSION"A"	P/N	PLATING	TERMINAL CONTACT PLATING	TERMINAL SOLDER PLATING	METAL SHELL PLATING
2.00 +0.35 -0.15	89485-8000	SEE NOTES(a)+(d)	GOLD FLASH	75 MICRO INCH BRIGHT TIN	100 MICRO INCH BRIGHT TIN
	89485-8001	SEE NOTES(b)+(d)	30 MICRO INCH GOLD		
2.50 +0.35 -0.10	89485-8002	SEE NOTES(a)+(d)	GOLD FLASH	75 MICRO INCH BRIGHT TIN	100 MICRO INCH BRIGHT TIN
	89485-8003	SEE NOTES(b)+(d)	30 MICRO INCH GOLD		



PRE-RELEASE REFERENCE USE ONLY

THIS DRAWING CONTAINS INFORMATION THAT IS PROPRIETARY TO MOLEX ELECTRONIC TECHNOLOGIES, LLC AND SHOULD NOT BE USED WITHOUT WRITTEN PERMISSION

DIMENSION UNITS	SCALE	CURRENT REV DESC: REMOVED OBSOLETE PART NUMBER AS PER PCN#508521/511698.	molex		
mm	1:1		SINGLE PORT UP-RIGHT USB CONNECTOR		
GENERAL TOLERANCES (UNLESS SPECIFIED)			PRODUCT CUSTOMER DRAWING		
	MM	INCH	EC NO: 742551	2021/04/14	
4 PLACES	±	±	DRWN: ABHISP1	2023/05/12	
3 PLACES	±	±	CHK'D: GGA	2023/05/12	
2 PLACES	± 0.25	± 0.01	APPR: GGA	2023/05/12	
1 PLACE	± 0.25	± 0.01	INITIAL REVISION:		
0 PLACES	±	±	DRWN: DAVID HU		
ANGULAR TOL	± 3.0°		APPR:		
DRAFT WHERE APPLICABLE MUST REMAIN WITHIN DIMENSIONS		THIRD ANGLE PROJECTION	DRAWING	SERIES	MATERIAL NUMBER
			A3-SIZE	89485	SEE TABLE
			CUSTOMER		
			GENERAL MARKET		
					SHEET NUMBER
					1 OF 1