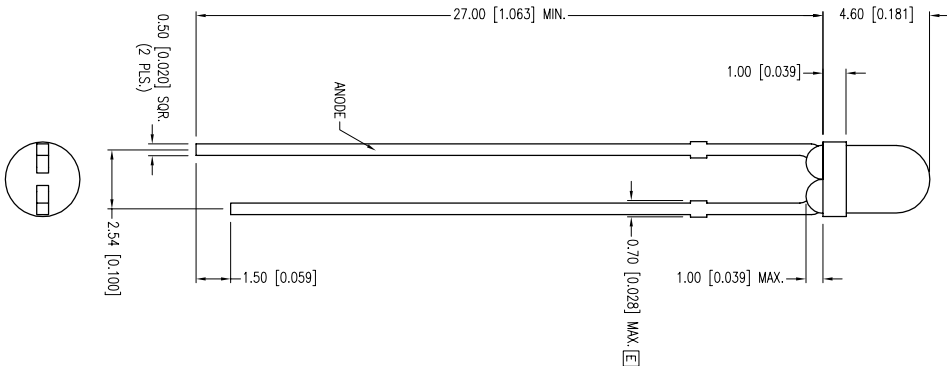
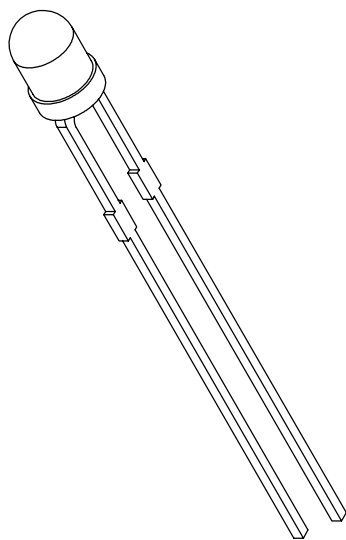
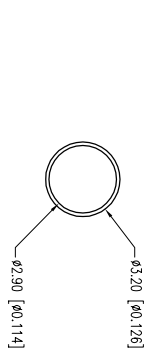


PART NUMBER	DATE	E.C.N. NUMBER AND REVISION COMMENTS	REV.	F
	04.28.92	REMOVED FLAT EDGE FROM FLANGE.	A	
	11.28.94	UPDATED SPECS.	B	
	02.21.95	UPDATED VIEW ANGLE.	C	
	04.11.01	E.C.N. #10BRDR. & REDRAWN.	D	
	05.06.11	E.C.N. #11717/10BRDR. & REDRAWN.	E	
	06.23.11	E.C.N. #11729.	F	

S&L - LX3044YD



[E] ELECTRO-OPTICAL CHARACTERISTICS TA = 25°C

PARAMETER	MIN	TYP.	MAX	UNITS	TEST COND
PEAK WAVELENGTH		585		nm	
FORWARD VOLTAGE		2.1	2.5	Vf	I _f =100mA
REVERSE VOLTAGE	5.0			Vr	
AXIAL INTENSITY		15		mod	I _f =20mA
VIEWING ANGLE		40		2x theta	
EMITTED COLOR:	YELLOW				
EPOXY LENS FINISH:	YELLOW DIFFUSED				

[E] LIMITS OF SAFE OPERATION AT 25°C

PARAMETER	MAX	UNITS
PEAK FORWARD CURRENT*	140	mA
STEADY CURRENT	30	mA
POWER DISSIPATION	75	mW
DERATE FROM 25°C	-1.6	mW/°C
OPERATING TEMP.	-40 TO +85	°C
STORAGE TEMP.	-40 TO +85	°C
SOLDERING TEMP.	+260	°C
2.0mm FROM BODY	3	SEC. MAX.

* I_c < 10μS

*UNLESS OTHERWISE SPECIFIED TOLERANCES PER DECIMAL PRECISION ARE: X=±1 (±0.039), X.X=±0.5 (±0.020), X.XX=±0.25 (±0.010), X.XXX=±0.127 (±0.005), LEAD SIZE=±0.05 (±0.002), LEAD LENGTH=±0.75 (±0.030), MIN.= -0.00 (DECIMAL PRECISION)

UNCONTROLLED DOCUMENT

LUMEX
 Creating LED and LCD Solutions Together™
 290 E. HELEN ROAD
 PALATINE, IL 60067-6976
 PHONE: +1.847.359.2790
 FAX: +1.847.359.6538
 WEB: WWW.LUMEX.COM

T-3mm (T-1) 585nm YELLOW LED, YELLOW DIFFUSED LENS.
 THE SPECIFICATIONS MAY CHANGE AT ANY TIME WITHOUT NOTICE DUE TO NEW MATERIALS OR PRODUCT IMPROVEMENT
 CONFIDENTIAL INFORMATION
 THE INFORMATION CONTAINED IN THIS DOCUMENT IS THE PROPERTY OF LUMEX INC. EXCEPT AS SPECIFICALLY AUTHORIZED IN WRITING BY LUMEX INC., THE HOLDER OF THIS DOCUMENT SHALL KEEP ALL INFORMATION CONTAINED HEREIN CONFIDENTIAL AND SHALL PROTECT SAME IN WHOLE OR IN PART FROM DISCLOSURE AND DISSEMINATION TO ALL THIRD PARTIES.

DATE: 05.06.11 DRAWN BY: AB
 PAGE: 1 OF 1 CHKD BY: KF
 SCALE: NTS APRVD BY: SS
 UNIT: mm [INCH]