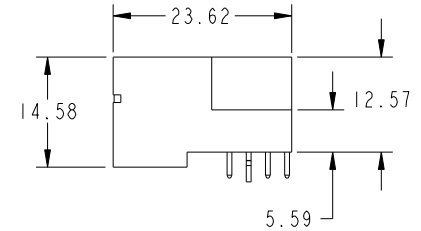
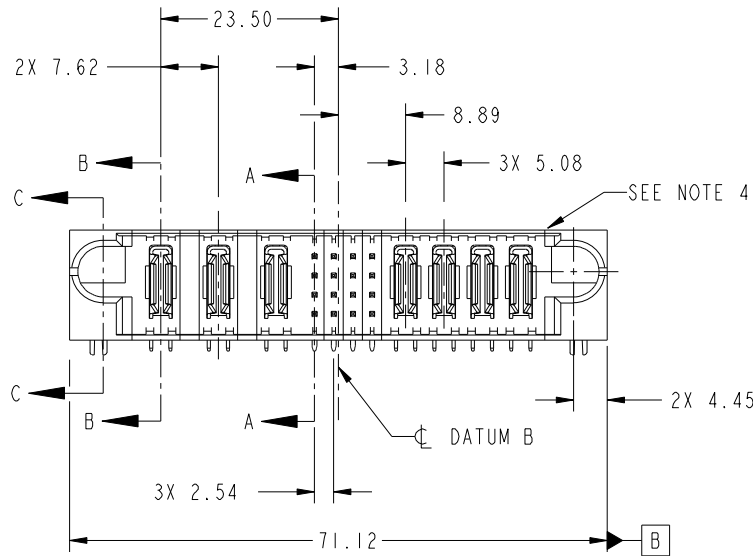
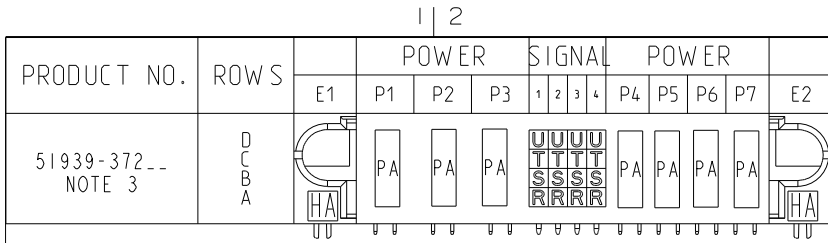


Tous droits strictement reserves. Reproduction ou communication a des tiers interdite sous quelque forme que ce soit sans autorisation ecrite du proprietaire. Propriete de c.FCI. Droits de reproduction FCI.

All rights strictly reserved. Reproduction or issue to third parties in any form whatever is not permitted without written authority from the proprietor. Property of FCI. Copyright FCI.



CODE	DIM "M" MATING LENGTH	CONTACT TYPE
U	[6.86]	SIGNAL
T	[6.86]	SIGNAL
S	[6.86]	SIGNAL
R	[6.86]	SIGNAL
PA	[N/A]	POWER
HA	[N/A]	HOLD-DOWN

mat'l code				SEE NOTE 2		tolerances unless otherwise specified		CUSTOMER		FCI	
lir	ecn no.	dr	date	linear	0.X ±0.5	COPY		www.fciconnect.com		title	
A	DG08-0195	W D	07/29/08	angles	0.XX ±0.25	projection		3ACP + 16S + 4P		RIGHT ANGLE SOLDER HEADER	
					0.XXX ±0.1	MM		product family		PwrBlade	
				dr	0° ±2°	scale		size		code	
				enr	Warren Du 07/14/08	1:1		dwg no		213	
				chr	Jerome Chen 07/14/08			51939-372		sheet	
				appd	Gary Hsieh 07/14/08					1 of 4	
					Joseph Hsia 07/14/08						
sheet index	revision sheet	A 1	A 2	A 3	A 4						

A

B

A

B

1 | 2

Pro/E

PDM: Rev: A

STAT: Released

Printed: Dec 20, 2010

cage code 2856

4

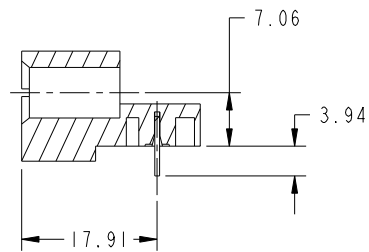
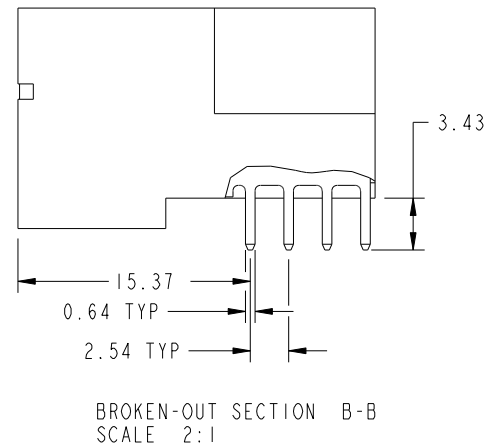
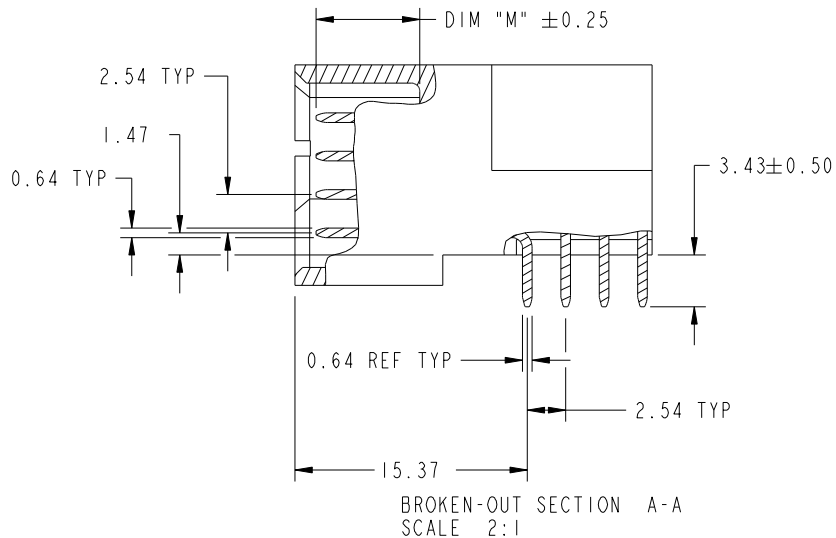
Tous droits strictement reserves. Reproduction ou communication a des tiers interdite sous quelque forme que ce soit sans autorisation ecrite du proprietaire. Propriete de c FCI. Droits de reproduction FCI.

All rights strictly reserved. Reproduction or issue to third parties in any form whatever is not permitted without written authority from the proprietor. Property of FCI. Copyright FCI.



PRODUCT NUMBER

51939-372--
NOTE: 3



mat'l code				SEE NOTE 2	tolerances unless otherwise specified	CUSTOMER	 www.fciconnect.com	
lir	ecn no.	dr	date	linear	0.X ± 0.5	COPY	 title 3ACP + 16S + 4P RIGHT ANGLE SOLDER HEADER	
A					0.XX ± 0.25	projection		
					0.XXX ± 0.1	 product family PwrBlade code 213		
				angles	0° ± 2°	 size A 51939-372 sheet 2 of 4		
				dr	Warren Du 07/14/08	scale		
				enr	Jerome Chen 07/14/08	1:1		
				chr	Gary Hsieh 07/14/08			
				appd	Joseph Hsia 07/14/08			
sheet index	revision sheet							

1 | 2

3 |

4

A

A

B

B

1 | 2

Pro/E

PDM: Rev: A

STAT: Released

Printed: Dec 20, 2010

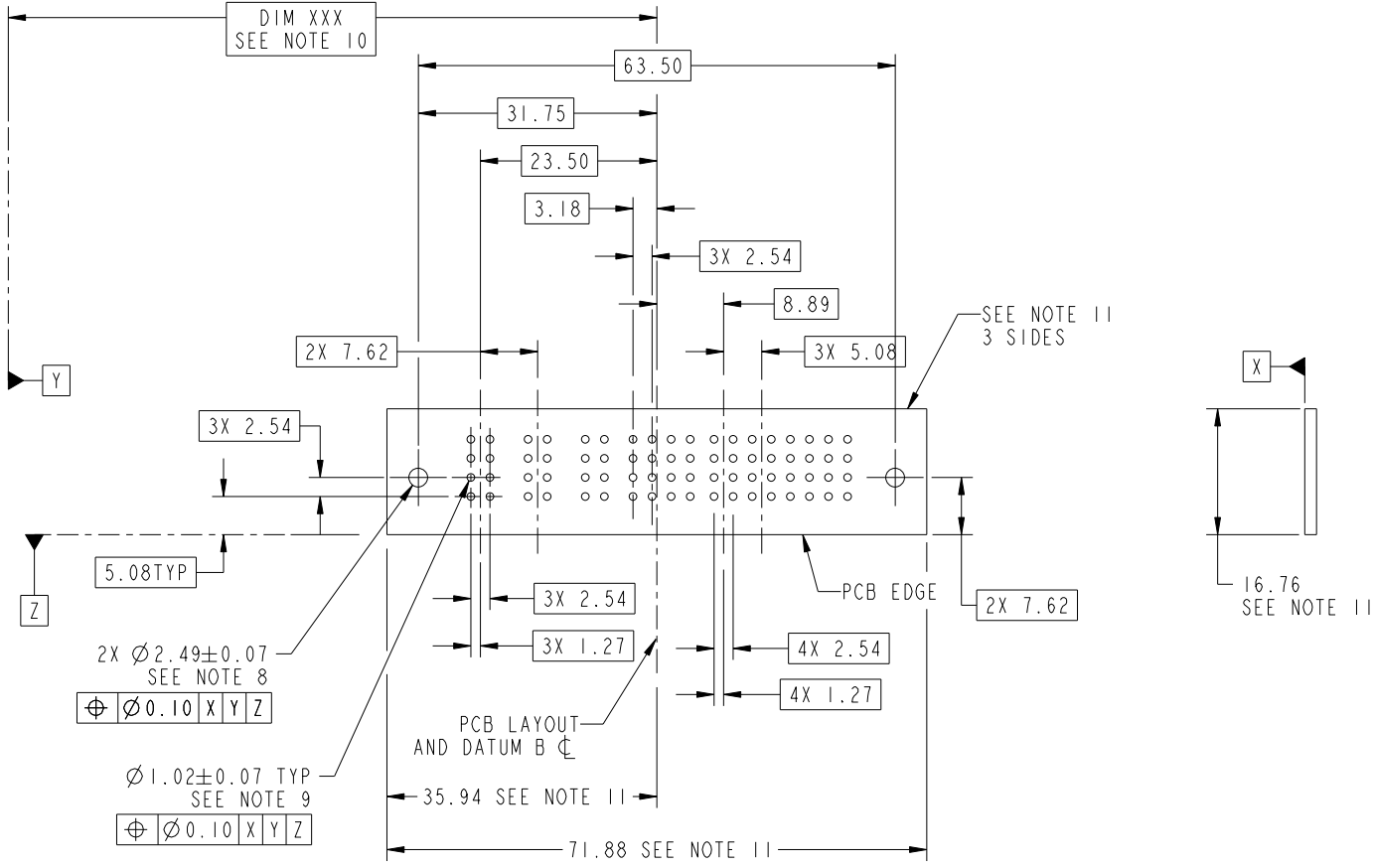
cage code 2856

Tous droits strictement réservés. Reproduction ou communication a des tiers interdite sous quelque forme que ce soit sans autorisation écrite du propriétaire. Propriété de c.FCI. Droits de reproduction FCI.

All rights strictly reserved. Reproduction or issue to third parties in any form whatever is not permitted without written authority from the proprietor. Property of FCI. Copyright FCI.



PRODUCT NUMBER
51939-372--
NOTE: 3



RECOMMENDED PCB LAYOUT

mat'l code		SEE NOTE 2		tolerances unless otherwise specified		CUSTOMER		 www.fciconnect.com	
ltr	ecn no.	dr	date	linear	0.X ± 0.5	COPY		title	
A					0.XX ± 0.25	projection		3ACP + 16S + 4P	
				angles	0.XXX ± 0.1			RIGHT ANGLE SOLDER HEADER	
					0° ± 2°			product family	
		dr	Warren Du	07/14/08		MM		PwrBlade	
		enr	Jerome Chen	07/14/08				code	
		chr	Gary Hsieh	07/14/08		scale		213	
		appd	Joseph Hsia	07/14/08		1:1		sheet	
sheet index		revision sheet				A		3 of 4	
						A		51939-372	

cage code 28506

Pro/E

PDM: Rev: A

STATUS: Released

Printed: Dec 20, 2010

Tous droits strictement reserves. Reproduction ou communication a des tiers interdite sous quelque forme que ce soit sans autorisation ecrite du proprietaire. Propriete de c.FCI. Droits de reproduction FCI.

All rights strictly reserved. Reproduction or issue to third parties in any form whatever is not permitted without written authority from the proprietor. Property of FCI. Copyright FCI.



1 | 2

3

4

PRODUCT NUMBER

51939-372--
NOTE: 3

NOTES:

1. DIMENSIONS AND TOLERANCES ARE IN ACCORDANCE WITH ASME Y14.5M, 1994 UNLESS OTHERWISE SPECIFIED.

CONNECTOR NOTES:

- 2. HOUSING MATERIAL: UL 94 V-0 GLASS FILLED HIGH-TEMP THERMOPLASTIC
POWER CONTACT MATERIAL: COPPER ALLOY
SIGNAL PIN MATERIAL: COPPER ALLOY
 - 3. 51939-372; 51939-372LF PLATING SPEC. SEE PRINT:10064183
 - 4. MANUFACTURER'S NAME, P/N, AND DATE CODE TO APPEAR ON THIS SURFACE.
 - 5. PRODUCT SPECIFICATION GS-12-149.
APPLICATION SPECIFICATION BUS-20-067.
 - 6. PACKAGED IN TRAYS.
- PCB NOTES:
- 7. ALL HOLE DIAMETERS ARE FINISHED HOLE SIZE.
 - 8. MOUNTING HOLES, WHERE APPLICABLE, ARE UNPLATED.
 - 9. $\varnothing 1.151 \pm 0.025$ DRILLED HOLES PLATED WITH 0.008 MIN SnPb OR Sn OVER 0.03 TO 0.08 Cu PLATING TO ACHIEVE $\varnothing 1.02 \pm .07$ HOLE.
 - 10. "DIM XXX" TO BE DETERMINED BY THE CUSTOMER.
 - 11. CONNECTOR KEEP-OUT ZONE.

A

A

B

B

mat'l code				SEE NOTE 2		tolerances unless otherwise specified		CUSTOMER		 www.fciconnect.com	
ltr	ecn no.	dr	date	linear	0.X ± 0.5		COPY		title 3ACP + 16S + 4P RIGHT ANGLE SOLDER HEADER		
A					0.XX ± 0.25		projection				
					0.XXX ± 0.1						
				angles	0° $\pm 2°$				product family PwrBlade code		
				dr	Warren Du	07/14/08	scale		size	dwg no	213
				enrg	Jerome Chen	07/14/08	1:1		A	51939-372	sheet
				chr	Gary Hsieh	07/14/08					4 of 4
				appd	Joseph Hsia	07/14/08					
sheet index	revision sheet										

1 | 2

Pro/E

PDM: Rev: A

STAT: Released

Printed: Dec 20, 2010

cage code 2856

4

Mouser Electronics

Authorized Distributor

Click to View Pricing, Inventory, Delivery & Lifecycle Information:

FCI:

[51939-372LF](#)