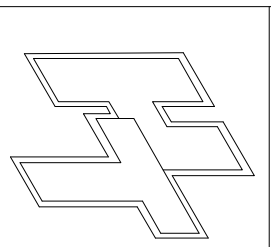
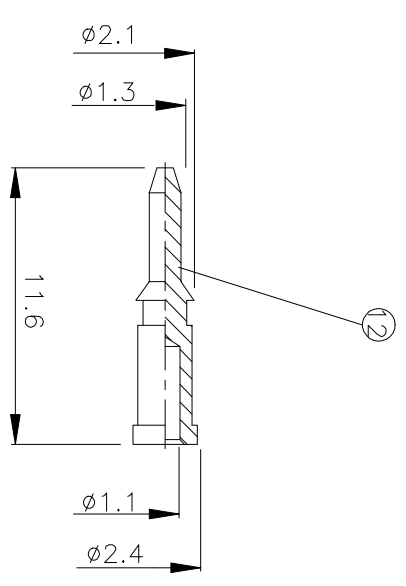
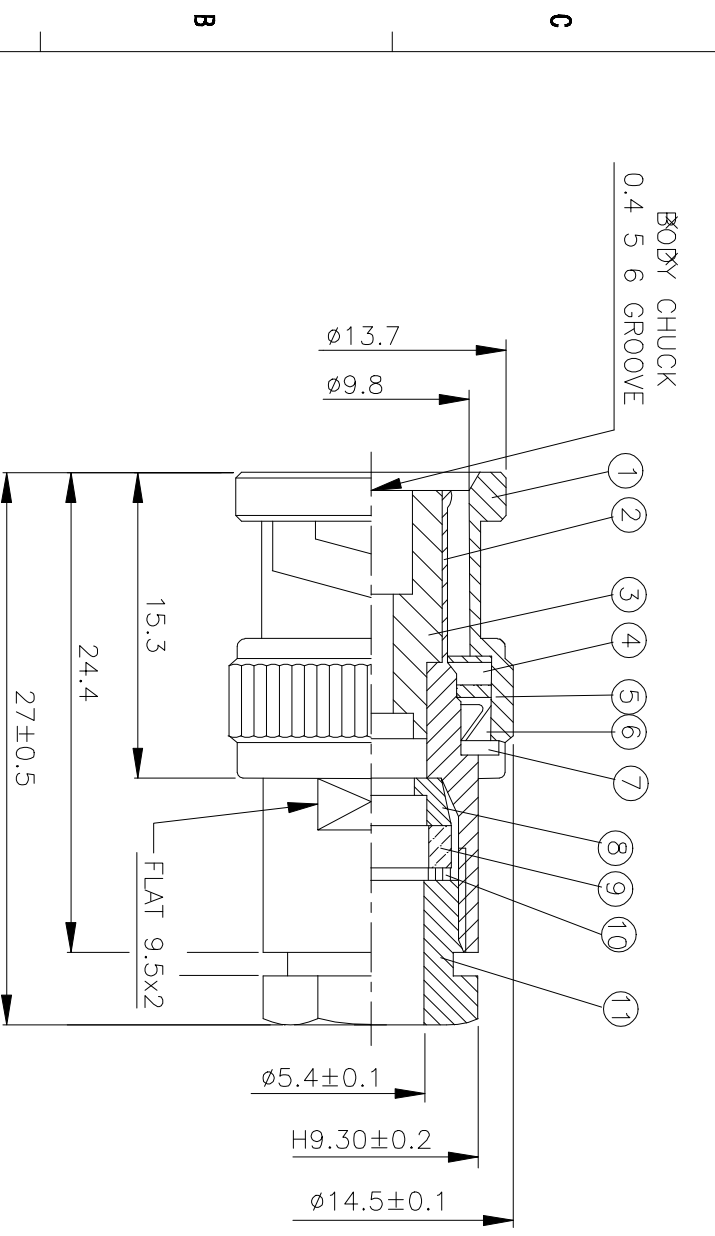
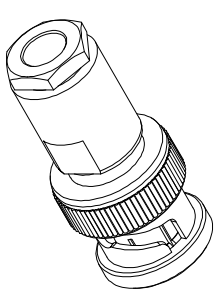


NO	DESCRIPTION	MATERIAL	Q'TY	FINISH	REMARK
1	BODY 1	BRASS	1	NICKEL	B-BNC0184-N
2	BODY 2	BRASS	1	NICKEL	B-BNC0229-N
3	INSULATION	TEFLON	1	TEFLON	I-0077T
4	GASKET	SI RUBBER	1	RUBBER	RU-0010
5	WASHER	BRASS	1	NICKEL	W-0026-N
6	SPRING	SK-5	1	NICKEL	W-0027-N
7	WASHER	BRASS	1	NICKEL	W-0025-N
8	SLEEVE	BRASS	1	NICKEL	B-BNC0289-N
9	GASKET	SI RUBBER	1	RUBBER	RU-0019
10	WASHER	BRASS	1	NICKEL	W-0037-N
11	NUT	BRASS	1	NICKEL	N-0022-N
12	PIN	BRASS	1	GOLD	P-BNC0171-G



**HUS-TSAN GROUP CO., LTD.**  
P.O.BOX 40-76, TAINAN, TAIWAN, R.O.C.  
**TITLE** BNC MALE CLAMP 500HM  
**FOR** RG58U, 58A/U, 142/U, 400/U  
**PART NO.** BNC-01F-TGN  
**DRAWING NO.** BNC 01F TGN

DRAWN	MARY	DATE
96.01.17		
CHECKED	黃巧君	DATE
Q.A.	蘇姿潔	
APPROVAL	徐潔標	DATE
REVISION		

**DIMENSIONS ARE IN MILLIMETERS**  
UNLESS OTHERWISE SPECIFIED  
TOLERANCE  
0.5-5 =  $\pm 0.2$     120-315 =  $\pm 1$   
5-30 =  $\pm 0.4$     315-1000 =  $\pm 1.6$   
30-120 =  $\pm 0.6$     1000-2000 =  $\pm 2.4$   
**SCALE** 4:1    **SIZE** A

REVISION	DESCRIPTION	ENGINEER