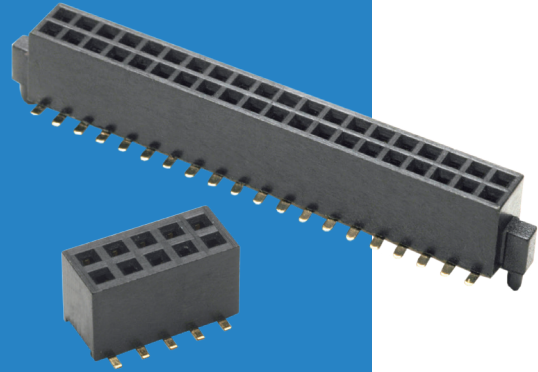


# Archer Connectors – M50

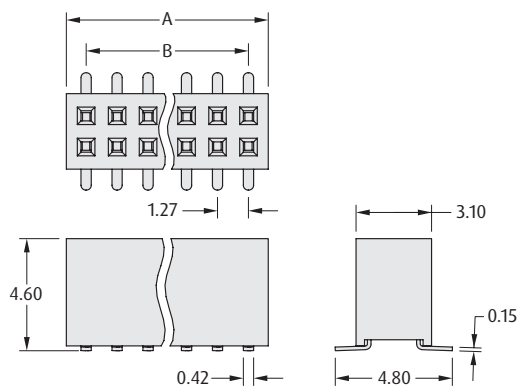
## Female Vertical Surface Mount

- ❖ Locating pegs (posts) available to ensure correct positioning on the board.
- ❖ Alternative height connectors available on the following page.
- ❖ Contact [technical@harwin.com](mailto:technical@harwin.com) for Tape and Reel options.
- ❖ Dual entry connector can be used as either top or bottom entry.



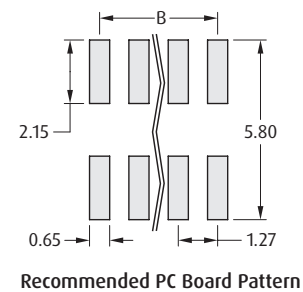
1.27mm (.050") PITCH

### WITHOUT POST

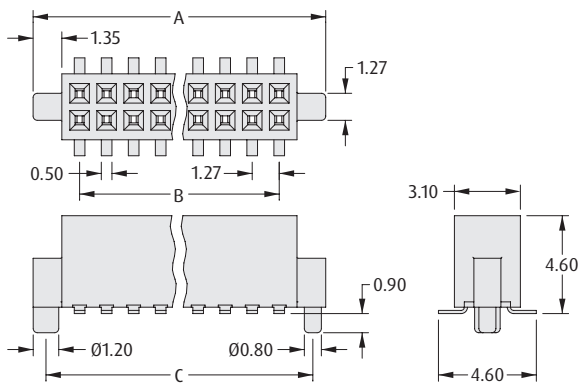


### CALCULATION

|          |  |
|----------|--|
| <b>A</b> | $B + 1.62$   |
| <b>B</b> | $1.27 \times (\text{No. of contacts per row} - 1)$ |

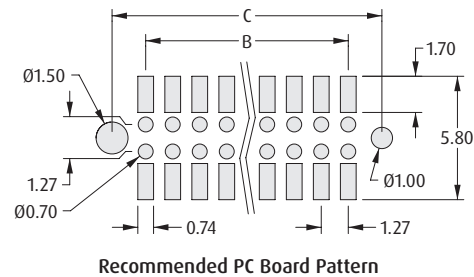


### WITH POST, DUAL ENTRY



### CALCULATION

|          |  |
|----------|--|
| <b>A</b> | $B + 4.37$   |
| <b>B</b> | $1.27 \times (\text{No. of contacts per row} - 1)$ |
| <b>C</b> | $B + 3.16$   |



### HOW TO ORDER

**M50 - 31 X XX XX**

#### SERIES CODE

#### TYPE

|          |               |
|----------|---------------|
| <b>0</b> | Without Posts |
| <b>1</b> | With Posts    |

#### FINISH

|           |                         |
|-----------|-------------------------|
| <b>42</b> | Gold + Tin (With Posts) |
| <b>45</b> | Gold (Without Posts)    |

#### NO. OF CONTACTS PER ROW

|                             |               |
|-----------------------------|---------------|
| <b>03 to 15, 20, 25, 50</b> | Without Posts |
| <b>03 to 15, 20, 25, 30</b> | With Posts    |

All dimensions in mm.