

APPLICATIONS

- ✧ High Definition Multi-Media Interface (HDMI).
- ✧ Digital Visual Interface (DVI).
- ✧ Unified Display Interface (UDI).
- ✧ MDDI Ports.
- ✧ PCI Express.
- ✧ Serial ATA.

IEC COMPATIBILITY

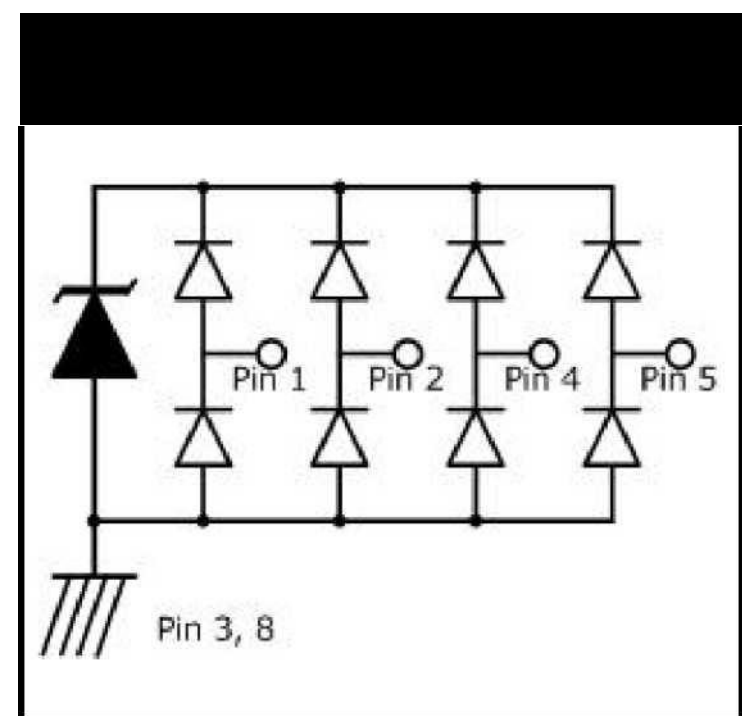
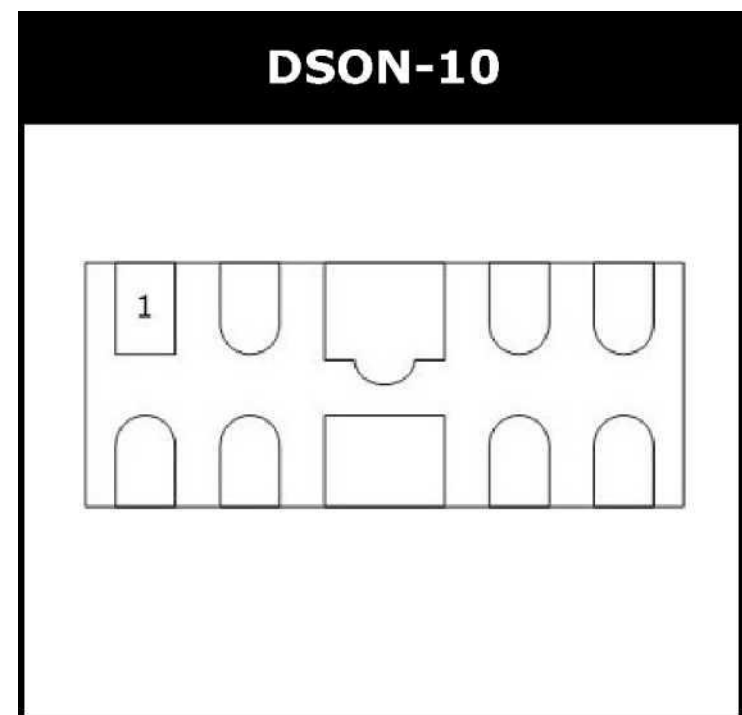
- ✧ IEC61000-4-2 (ESD) $\pm 30\text{kV}$ (air), $\pm 15\text{kV}$ (contact).
- ✧ IEC61000-4-4 (EFT) 40A (5/50 ns).
- ✧ IEC61000-4-5 (Lightning) 4A (8/20 μs).

FEATURES

- ✧ 150 Watts Peak Pulse Power per Line ($t_p=8/20\mu\text{s}$).
- ✧ Protects two or four I/O lines.
- ✧ Low capacitance: 0.3pF typical (I/O to I/O).
- ✧ Low operating voltage: 5V.
- ✧ RoHS Compliant.

MECHANICAL CHARACTERISTICS

- ✧ DSON-10 Package.
- ✧ Molding Compound Flammability Rating : UL 94V-O.
- ✧ Weight 15 Milligrams (Approximate).
- ✧ Quantity Per Reel : 3,000pcs.
- ✧ Reel Size : 7 inch.

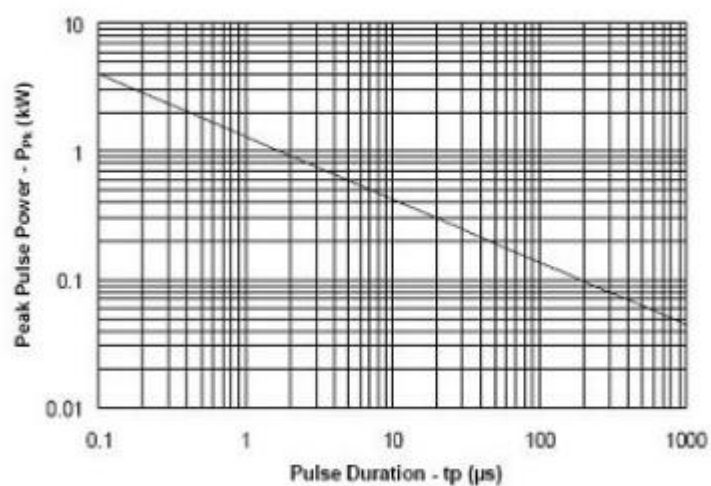
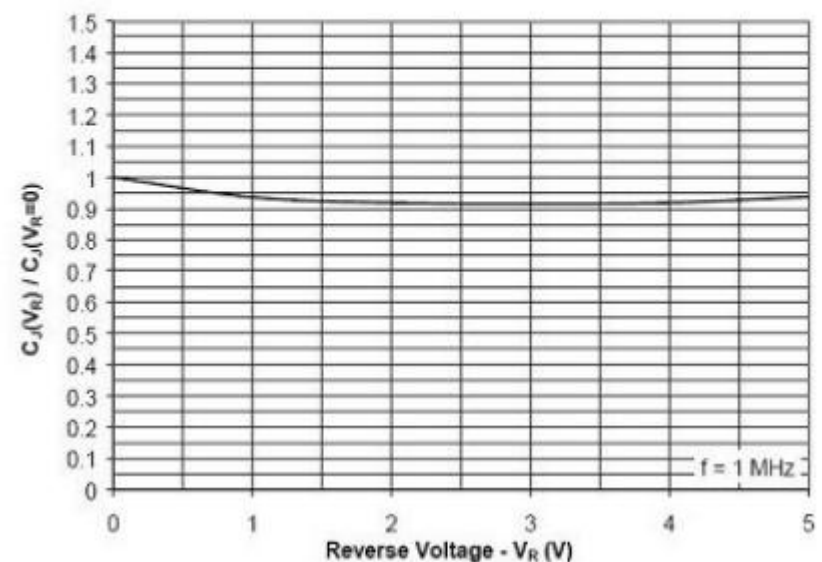
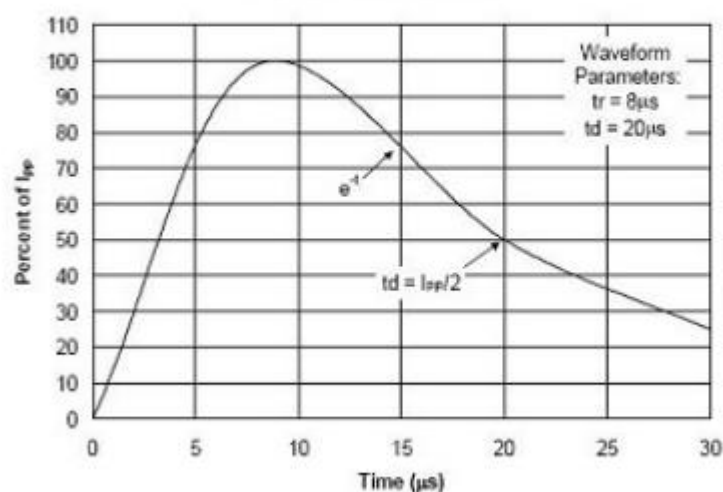


DEVICE CHARACTERISTICS
MAXIMUM RATINGS (@ 25°C Unless Otherwise Specified)

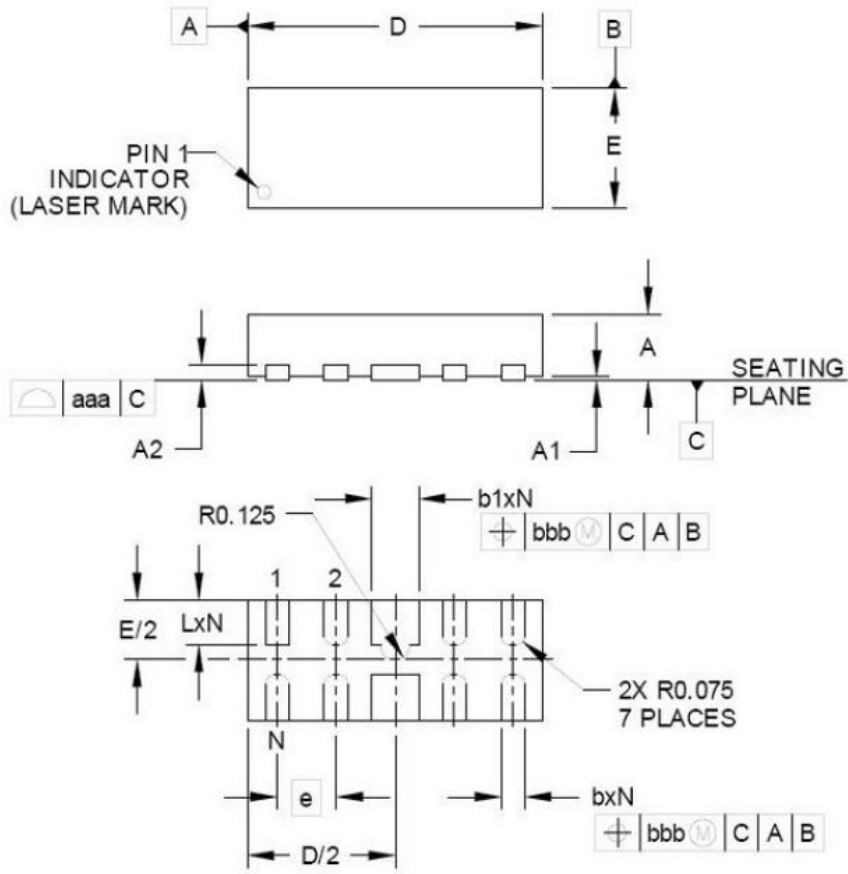
PARAMETER	SYMBOL	VALUE	UNITS
Peak Pulse Power (tp=8/20μs waveform)	P _{PP}	70	Watts
Lead Soldering Temperature	T _L	260 (10 sec.)	°C
Operating Temperature Range	T _J	-55 ~ 150	°C
Storage Temperature Range	T _{STG}	-55 ~ 150	°C

ELECTRICAL CHARACTERISTICS PER LINE (@ 25°C Unless Otherwise Specified)

PART NUMBER	V _{RWM}	V _{BR}	I _T	V _C	V _C		I _R	C _J
	(V) (max.)	(V) (min.)	(mA)	@1A (max.)	(max.)	(@A)	(μA) (max.)	(pF) (typ.)
JULC0524P	5	6.0	1	15	20	4	0.5	0.6

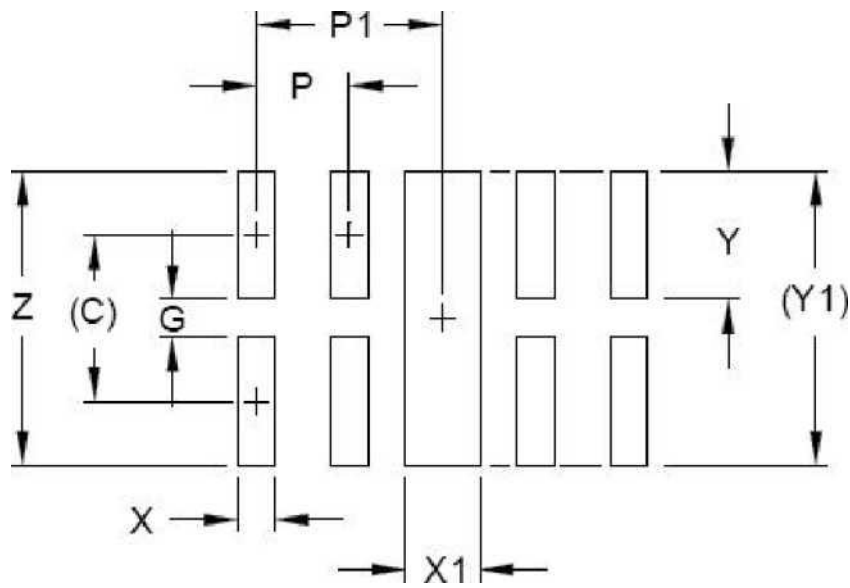
Non-Repetitive Peak Pulse Power vs. Pulse Time

Normalized Capacitance vs. Reverse Voltage

Pulse Waveform


DSON-10 PACKAGE OUTLINE & DIMENSIONS



DIM	DIMENSIONS					
	INCHES			MILLIMETERS		
	MIN	NOM	MAX	MIN	NOM	MAX
A	.020	.023	.026	0.50	0.58	0.65
A1	0.00	.001	.002	0.00	0.03	0.05
A2	(.005)			(0.13)		
b	.006	.008	.010	0.15	0.20	0.25
b1	.014	.016	.018	0.35	0.40	0.45
D	.094	.098	.102	2.40	2.50	2.60
E	.035	.039	.043	0.90	1.00	1.10
e	.020 BSC			0.50 BSC		
L	.012	.015	0.017	0.301	0.381	0.425
N	10			10		
aaa	.003			0.08		
bbb	.004			0.10		

*** SOLDERING FOOTPRINT**



DIM	DIMENSIONS	
	INCHES	MILLIMETERS
C	(.034)	(0.875)
G	.008	0.20
P	.020	0.50
P1	.039	1.00
X	.008	0.20
X1	.016	0.40
Y	.027	0.675
Y1	(.061)	(1.55)
Z	.061	1.55

Website: <http://www.jksemit.com> For additional information, please contact your local Sales Representative.

©Copyright 2016, jksemit