

Bocube

Enclosures, polycarbonate UL 94 V0, single-coloured



B 273612 PC-V0 7035

Order no.: 96017665

* = Available on request.

Characteristics

Colour of enclosure group
Light grey, similar to RAL 7035

Colour of enclosure group
Light grey

Protection class
IP 66, 68 - 1,2m (2 hours)

Enclosure Material

ABS or PC UL 94 V0 (material is suitable for outdoor use; f1-listing according to UL 746C)

PU seal, foamed; for details please see Technical Information

Scope of delivery

Lid and base, hinged quick-release catches

Important!

To compensate for pressure when temperatures change and cause moisture in the enclosure, we recommend that you use a pressure compensation element.

» Additional information

Technical documentation / Downloads

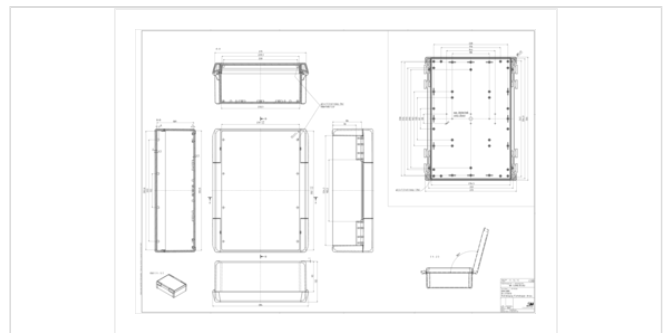
Technical drawings

3D product data in STEP format: Registration necessary
Product drawing in PDF format: 96017665 B-273612-PC-V0-7035.pdf (259.1 KB)

Dimensions

Dimensions
284 x 364 x 120 mm

Product drawing



Product information

Bocube GB.pdf (1.9 MB)
Highlights Bocube.pdf (3.8 MB)

Product drawing in DXF format: 96017665 B-273612-PC-V0-7035.dxf (3.9 MB)

Drawing for mechanical processing: 96017665 B-273612-PC-V0-7035-G.dxf (4.0 MB)

Milling contours are shown here as a DXF file. (Sub D, USB, HDMI, cable glands, ...)

Works Test Certificates

688 WPZ-Bocube-PC-V0 DE.pdf (184.6 KB)

689 WPZ-Bocube-ABS DE.pdf (165.1 KB)

689 WPZ-Bocube-ABS EN.pdf (160.3 KB)

688 WPZ-Bocube-PC-V0 EN.pdf (179.1 KB)

Matching accessories



Hinged quick-release catches (Set), polycarbonate UL 94 V0 or ABS

96310005	B SC PC-V0 7035	For B 233012, B 273612	Light grey
96310004	B SC PC-V0 7024	For B 233012, B 273612	Graphite grey
96310009	B SC PC-V0 6029	For B 233012, B 273612	Mint green
96310002	B SC PC-V0 5002	For B 233012, B 273612	Ultramarine blue
96310000	B SC PC-V0 3000	For B 233012, B 273612	Flame red
96310003	B SC PC-V0 1023	For B 233012, B 273612	Traffic yellow



Hand-operated hinged catch (set), polycarbonate UL 94 V0 or ABS

96910000	B SC HB PC-V0 3000	For B 233012, B 273612	Flame red
96910002	B SC HB PC-V0 5002	For B 233012, B 273612	Ultramarine blue
96910009	B SC HB PC-V0 6029	For B 233012, B 273612	Mint green
96910004*	B SC HB PC-V0 7024	For B 233012, B 273612	Graphite grey
*			
96910005*	B SC HB PC-V0 7035	For B 233012, B 273612	Light grey
*			
96910003	B SC HB PC-V0 1023	For B 233012, B 273612	Traffic yellow



Wall brackets

96510605	B WL-2 7035	For B 2330.., B 2736..	Light grey
96510604	B WL-2 7024	For B 2330.., B 2736..	Graphite grey



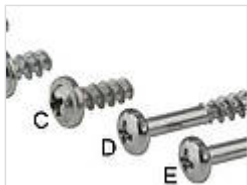
Mounting panels, laminated paper, 2 mm

96607600	B M 2736	For B 2736..	
----------	----------	--------------	--



Front panels, 2 mm, natural-coloured anodised aluminium

96707600	B FP 2736	For B 2736.., front panel thickness 2.5 mm	
----------	-----------	--------------------------------------------	--



Sets of screws

96300002	B SHR-2	E (for optional screwing of enclosures B 2330, B 2736)
96600010	B M-SHR	C (for fixing mounting panels B M 1008-2736)



Distance bolts

96774000	DIBLZ AK 30x7/IM3/74	ND = 2,4 - 2,6, for B 233012, B 273612 if a mounting plate is used
96776000	DIBLZ AK 30x5/IM3/76	ND = 2,4 - 2,6, for B 233012, B 273612
96786000	DIBLZ AK 30x7/IM3/86	ND = 2.4 - 2.6, for B....12 if a mounting plate is used
96788000	DIBLZ AK 30x5/IM3/88	ND = 2.4 - 2.6, for B....12



Blanking plugs to determine the hinge side

96410000	B VS 3000	Flame red
96410005	B VS 7035	Light grey
96410004	B VS 7024	Graphite grey



DIN rails DIN EN 60715 TH 15, galvanised steel

22153451	TS 15	For B 2736..
----------	-------	--------------



DIN rails DIN EN 60715 G 32, galvanised steel

22323451	TS 32	For B 2736..
----------	-------	--------------



DIN rails DIN EN 60715 TH 35, galvanised steel

22353451	TS 35	For B 2736..
----------	-------	--------------



DIN rail acc. to DIN EN 60715 TH 15

22152301	TS 15	For EM/ET 224, EM/ET 233-236, EM/ET 239-242, B 2617.., B 2736.. (crosswise)
----------	-------	-----------------------------------------------------------------------------



DIN rail acc. to DIN EN 60715 G 32

22322301	TS 32	For EM/ET 224, EM/ET 233-236, EM/ET 239-242, B 2617.., B 2736.. (crosswise)
----------	-------	-----------------------------------------------------------------------------



DIN rail acc. to DIN EN 60715 TH 35

22352301 TS 35

For EM/ET 224, EM/ET 233-236, EM/ET
239-242, B 2617.., B 2736.. (crosswise)



Pressure compensation membrane DAE

52011000 DAE-D11

Self-adhesive membrane \varnothing 11 mm