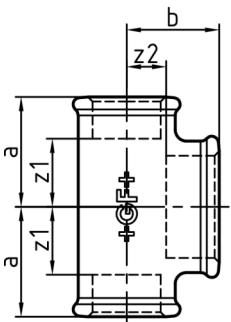
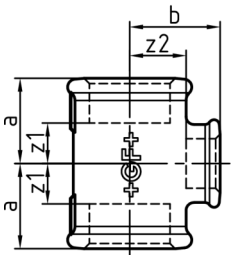


## Malleable cast iron fittings

130

Tee, reducing or increasing on the branch, ISO/EN B1

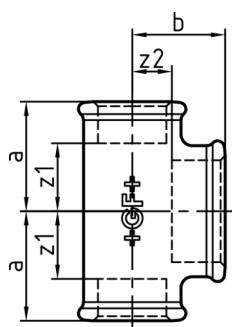
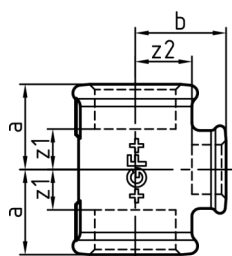


	Dim. (1-2) [inch]	EN	Code	SP	kg	a [mm]	b [mm]	z1 [mm]	z2 [mm]
B	3/8 - 1/4	•	770 130 115	10	0.083	23	23	13	13
G	3/8 - 1/4	•	770 130 215	10	0.109	23	23	13	13
B	3/8 - 1/2	•	770 130 116	10	0.095	26	26	16	13
G	3/8 - 1/2	•	770 130 216	10	0.099	26	26	16	13
B	1/2 - 1/4	•	770 130 117	10	0.142	24	24	11	14
G	1/2 - 1/4	•	770 130 217	10	0.146	24	24	11	14
B	1/2 - 3/8	•	770 130 119	10	0.109	26	26	13	16
G	1/2 - 3/8	•	770 130 219	10	0.120	26	26	13	16
B	1/2 - 3/4	•	770 130 121	10	0.155	31	30	18	15
G	1/2 - 3/4	•	770 130 221	10	0.161	31	30	18	15
B	1/2 - 1	•	770 130 130	10	0.247	34	32	21	15
G	1/2 - 1	•	770 130 230	10	0.253	34	32	21	15
B	3/4 - 1/4	•	770 130 122	10	0.126	26	27	11	17
G	3/4 - 1/4	•	770 130 222	10	0.187	26	27	11	17
B	3/4 - 3/8	•	770 130 124	10	0.199	28	28	13	18
G	3/4 - 3/8	•	770 130 224	10	0.209	28	28	13	18
B	3/4 - 1/2	•	770 130 127	10	0.234	30	31	15	18
G	3/4 - 1/2	•	770 130 227	10	0.238	30	31	15	18
B	3/4 - 1	•	770 130 132	10	0.224	36	35	21	18
G	3/4 - 1	•	770 130 232	10	0.234	36	35	21	18
B	1 - 1/4	•	770 130 133	10	0.250	28	31	11	21
G	1 - 1/4	•	770 130 233	10	0.258	28	31	11	21
B	1 - 3/8	•	770 130 134	10	0.269	30	32	13	22
G	1 - 3/8	•	770 130 234	10	0.278	30	32	13	22
B	1 - 1/2	•	770 130 137	30	0.314	32	34	15	21
G	1 - 1/2	•	770 130 237	30	0.325	32	34	15	21
B	1 - 3/4	•	770 130 140	30	0.343	35	36	18	21
G	1 - 3/4	•	770 130 240	30	0.355	35	36	18	21
B	1 - 1 1/4	•	770 130 145	25	0.328	42	40	25	21
G	1 - 1 1/4	•	770 130 245	25	0.326	42	40	25	21
B	1 - 1 1/2	•	770 130 159	20	0.362	46	42	29	23
G	1 - 1 1/2	•	770 130 259	20	0.388	46	42	29	23
B	1 1/4 - 3/8	•	770 130 146	30	0.260	32	36	13	26
G	1 1/4 - 3/8	•	770 130 246	30	0.270	32	36	13	26
B	1 1/4 - 1/2	•	770 130 148	25	0.392	34	38	15	25
G	1 1/4 - 1/2	•	770 130 248	25	0.405	34	38	15	25
B	1 1/4 - 3/4	•	770 130 151	20	0.454	36	41	17	26
G	1 1/4 - 3/4	•	770 130 251	20	0.468	36	41	17	26
B	1 1/4 - 1	•	770 130 155	20	0.488	40	42	21	25
G	1 1/4 - 1	•	770 130 255	20	0.498	40	42	21	25
B	1 1/4 - 1 1/2	•	770 130 161	15	0.460	48	46	29	27
G	1 1/4 - 1 1/2	•	770 130 261	15	0.474	48	46	29	27
B	1 1/4 - 2	•	770 130 177	10	0.720	54	48	35	24
G	1 1/4 - 2	•	770 130 277	10	0.740	54	48	35	24
B	1 1/2 - 3/8	-	770 130 162	10	0.436	33	38	14	28
G	1 1/2 - 3/8	-	770 130 262	10	0.442	33	38	14	28
B	1 1/2 - 1/2	•	770 130 164	15	0.462	36	42	17	29
G	1 1/2 - 1/2	•	770 130 264	15	0.477	36	42	17	29
B	1 1/2 - 3/4	•	770 130 166	40	0.408	38	44	19	29
G	1 1/2 - 3/4	•	770 130 266	40	0.424	38	44	19	29
B	1 1/2 - 1	•	770 130 169	15	0.573	42	46	23	29
G	1 1/2 - 1	•	770 130 269	15	0.588	42	46	23	29
B	1 1/2 - 1 1/4	•	770 130 172	15	0.516	46	48	27	29
G	1 1/2 - 1 1/4	•	770 130 272	15	0.541	46	48	27	29
B	1 1/2 - 2	•	770 130 179	10	0.738	55	52	36	28
G	1 1/2 - 2	•	770 130 279	10	0.765	55	52	36	28
B	2 - 1/2	•	770 130 181	12	0.692	38	48	14	35
G	2 - 1/2	•	770 130 281	12	0.688	38	48	14	35
B	2 - 3/4	•	770 130 183	25	0.681	40	50	16	35
G	2 - 3/4	•	770 130 283	25	0.705	40	50	16	35
B	2 - 1	•	770 130 185	10	0.841	44	52	20	35
G	2 - 1	•	770 130 285	10	0.861	44	52	20	35
B	2 - 1 1/4	•	770 130 188	10	0.683	48	54	24	35

table continued next page

# GF Piping Systems Datasheet

valid from  
9/9/09



	Dim. (1-2) [inch]	EN	Code	SP	kg	a [mm]	b [mm]	z1 [mm]	z2 [mm]
G	2 - 1 ¼	•	<b>770 130 288</b>	10	0.707	48	54	24	35
B	2 - 1 ½	•	<b>770 130 191</b>	10	0.914	52	55	28	36
G	2 - 1 ½	•	<b>770 130 291</b>	10	0.936	52	55	28	36
B	2 - 2 ½	-	<b>770 130 197</b>	10	1.270	66	61	42	34
G	2 - 2 ½	-	<b>770 130 297</b>	10	1.310	66	61	42	34
B	2 ½ - ½	-	<b>770 130 198</b>	10	0.790	41	56	14	43
G	2 ½ - ½	-	<b>770 130 298</b>	10	0.815	41	56	14	43
B	2 ½ - ¾	-	<b>770 130 199</b>	15	0.818	45	59	18	44
G	2 ½ - ¾	-	<b>770 130 299</b>	15	0.833	45	59	18	44
B	2 ½ - 1	•	<b>770 129 115</b>	15	0.925	47	60	20	43
G	2 ½ - 1	•	<b>770 129 215</b>	15	0.950	47	60	20	43
B	2 ½ - 1 ¼	•	<b>770 129 116</b>	10	1.000	52	62	25	43
G	2 ½ - 1 ¼	•	<b>770 129 216</b>	10	0.990	52	62	25	43
B	2 ½ - 1 ½	•	<b>770 129 118</b>	10	1.105	55	63	28	44
G	2 ½ - 1 ½	•	<b>770 129 218</b>	10	1.135	55	63	28	44
B	2 ½ - 2	•	<b>770 129 120</b>	10	1.170	61	66	34	42
G	2 ½ - 2	•	<b>770 129 220</b>	10	1.200	61	66	34	42
B	3 - ½	-	<b>770 129 124</b>			46	63	15	50
G	3 - ½	-	<b>770 129 224</b>	10	1.108	46	63	15	50
B	3 - ¾	-	<b>770 129 125</b>			48	66	18	51
G	3 - ¾	-	<b>770 129 225</b>	10	1.225	48	66	18	51
B	3 - 1	•	<b>770 129 126</b>			51	67	21	50
G	3 - 1	•	<b>770 129 226</b>	10	1.270	51	67	21	50
B	3 - 1 ¼	•	<b>770 129 127</b>			55	70	25	51
G	3 - 1 ¼	•	<b>770 129 227</b>	10	1.450	55	70	25	51
B	3 - 1 ½	•	<b>770 129 128</b>			58	71	28	52
G	3 - 1 ½	•	<b>770 129 228</b>	10	1.570	58	71	28	52
B	3 - 2	•	<b>770 129 130</b>			64	73	34	49
G	3 - 2	•	<b>770 129 230</b>	10	1.603	64	73	34	49
B	3 - 2 ½	•	<b>770 129 131</b>	5	1.800	72	76	42	49
G	3 - 2 ½	•	<b>770 129 231</b>	5	1.845	72	76	42	49
B	4 - 1	-	<b>770 129 133</b>			56	80	20	63
G	4 - 1	-	<b>770 129 233</b>	6	2.350	56	80	20	63
B	4 - 1 ½	-	<b>770 129 135</b>			61	84	28	65
G	4 - 1 ½	-	<b>770 129 235</b>	4	2.860	64	84	28	65
B	4 - 2	•	<b>770 129 136</b>			70	86	34	62
G	4 - 2	•	<b>770 129 236</b>	4	2.800	70	86	34	62
B	4 - 2 ½	-	<b>770 129 237</b>	4	2.990	77	89	41	62
G	4 - 2 ½	-	<b>770 129 237</b>	4	2.990	77	89	41	62
B	4 - 3	•	<b>770 129 138</b>			84	92	48	62
G	4 - 3	•	<b>770 129 238</b>	4	3.260	84	92	48	62

PF 1 11 020 043

The technical data are not binding and not expressly warranted characteristics of the goods. They are subject to change. Our General Conditions of Sale apply.

Georg Fischer Piping Systems Ltd, Postfach, CH-8201 Schaffhausen/Switzerland  
Phone +41 -(0)52-631 1111  
e-mail: [info.ps@georgfischer.com](mailto:info.ps@georgfischer.com)  
Internet: <http://www.piping.georgfischer.com>