

8300 Push Button Switches

12A 250Vac



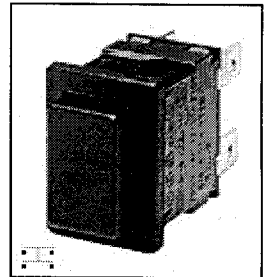
12(2)A 250Vac T105
 6(6)A 250Vac T125 5E4 (50,000 Operations)
 8(8)A 250Vac T105 5E4 (50,000 Operations)
 Single pole 13A 250Vac Double pole 12A 250Vac
 250Vac ½hp, 125Vac ¼hp
 UL file no. E45221

3mm contact gap.
 Suitable for Class II appliances

Additional technical data for this product range can be found [here](#).

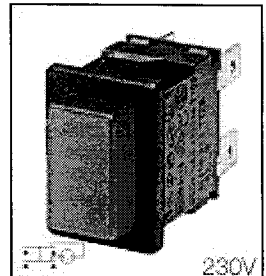
Examples of full 10 figure product numbers appear under the photographs opposite.
 To order other variants use the chart below for the first 7 digits, then specify print, colour, etc.

| | | | | |
|----------|-------------|----------|----------|--------------------|
| H | 8300 | A | B | --- |
| Terminal | Function | Button | Body | Print, Colour, etc |



H8350AB AAA

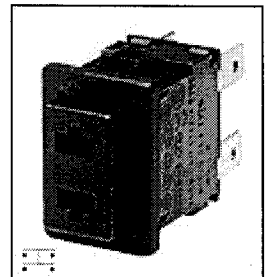
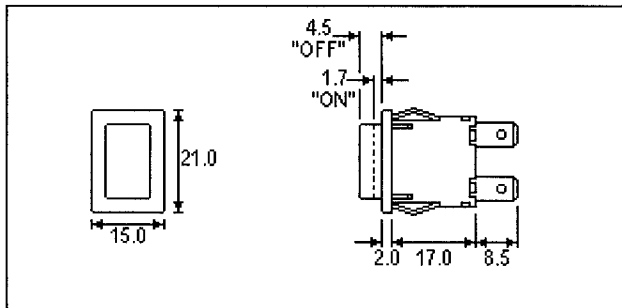
T8350AB AAA



H8353AB NAA

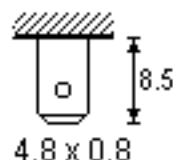
T8353AB NAA

Dimensions

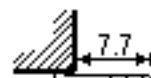


H8350HB AAA

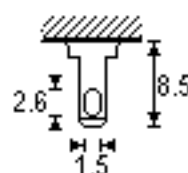
T8350HB AAA

TERMINAL CODE
FUNCTION CODE
ACTUATOR CODE
BODY CODE
H


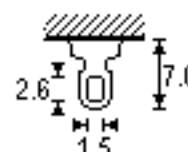
4.8 x 0.8

A


Right angle 4.8 x 0.8

K


Solder terminal 2.8 x 0.8

T


Solder terminal 3.0 x 0.8

X


PCB 0.85sq

J

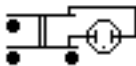
 Right angle
PCB

8300

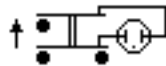

ON/OFF Single Pole

8301


ON/OFF Mom Single Pole

8303


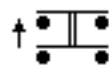
ON/OFF Alternate Illuminated SP

8304


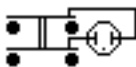
ON/OFF Mom Illuminated SP

8350

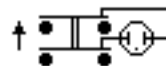

ON/OFF Alternate Double Pole

8351


ON/OFF Mom Double Pole

8353


ON/OFF Alternate Illuminated DP

8354


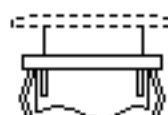
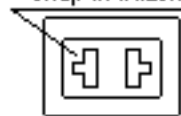
ON/OFF Mom Illuminated DP

A

Standard button

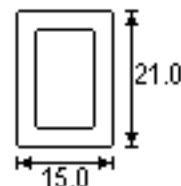
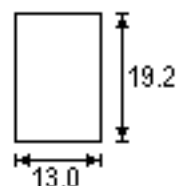

H

 Slotted for
custom buttons

 Slots for
snap-in buttons

 One example of
the many options

Panel cut-out

Flange

B


Dimensions for snap-in fixing

Panel thickness

0.75 - 1.24 19.1/19.2 x 12.9/13.0

1.25 - 1.99 19.3/19.4 x 12.9/13.0

2.0 - 3.0 19.7/19.8 x 12.9/13.0

 Panel holes must be punched in
direction unit is to be fitted.