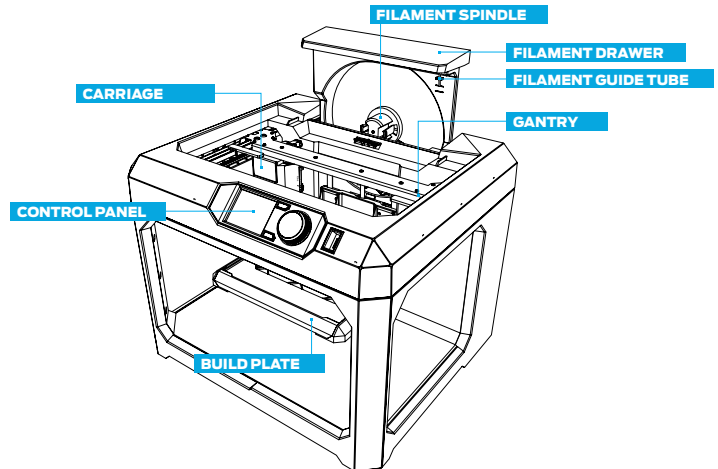


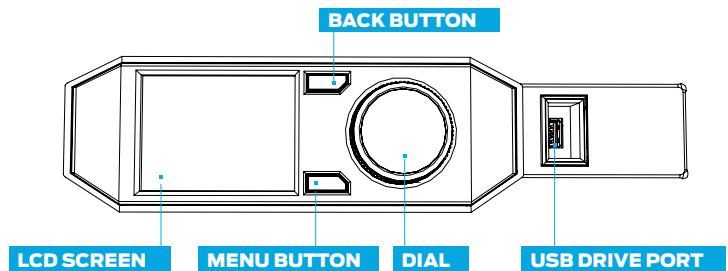
Unboxing & Setup

- [Unboxing walkthrough](#)
- [How to power up](#)
- [Register your printer](#)
- [Build plate tape applied](#)
- [Smart Extruder+ attached](#)
- [Build Plate is leveled](#)
- [Filament loaded properly](#)
- [Download MakerBot Desktop](#)
- [Install MakerBot Desktop](#)



Connecting To Your Printer

- [USB](#)
- [WiFi](#)
- [Ethernet](#)
- [Updating Firmware](#)

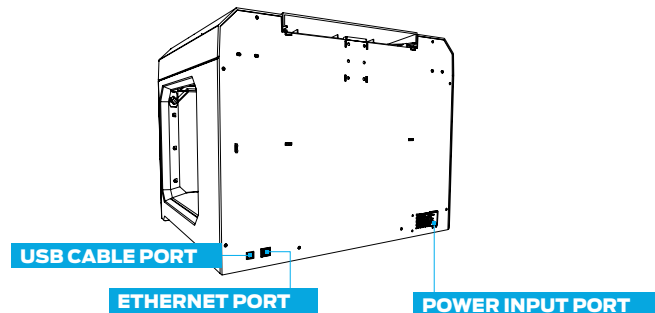


Preparing Files For Print

- [MakerBot Desktop walkthrough](#)
- [How to prepare a file](#)
- [How to print](#)

3D Model Resources

- [Thingiverse](#)
- [MakerBot Digitizer](#)
- [TinkerCad](#)
- [123D Design](#)
- [Sculptris](#)
- [Meshmixer](#)
- [Openscad](#)

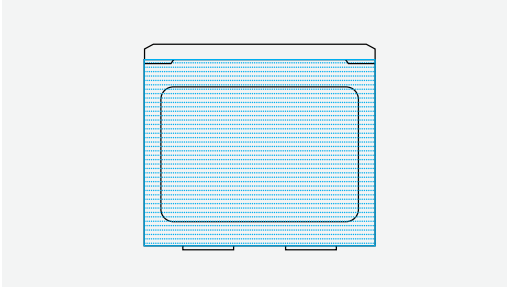


Getting Help / Printing Tips

- [MakerBot Support](#)

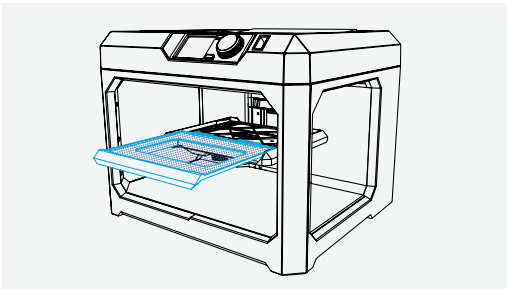
PREPRINT CHECKLIST

Before every print, check the following:



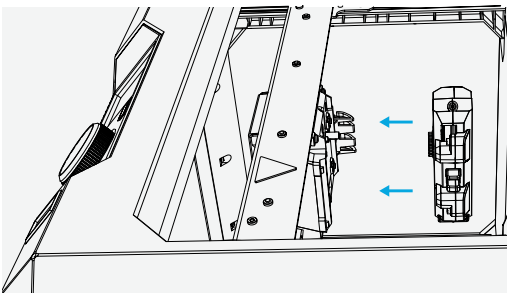
Build Plate Tape Applied

Build plate tape is on the build plate and (mostly) free of tears. If there are more than a few minor tears, remove the build plate and apply new tape before printing.



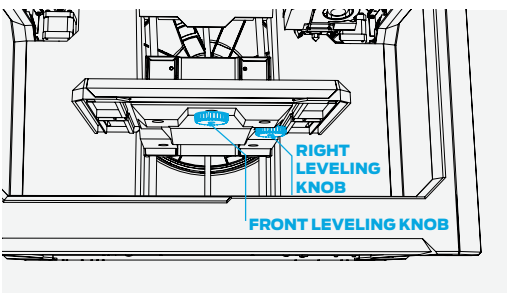
Build Plate Installed

The build plate has been loaded properly onto the Z Stage.



MakerBot Replicator Smart Extruder Attached

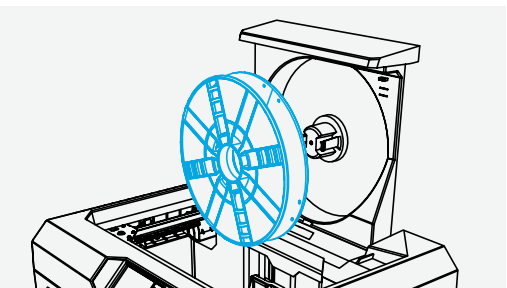
A Smart Extruder is attached to the carriage. Double-check that the Smart Extruder is attached by scrolling the dial to **Utilities > Attach Smart Extruder**.



Build Plate Is Level

If you were not the last person to use the printer, you should level your build plate before printing. Scroll the dial to **Utilities > Level Build Plate** and follow the on-screen instructions until assisted leveling is complete.

**Relevel when you change the Smart Extruder, update firmware, or filament appears squiggly or not at all.*



Filament Loaded Properly

Ensure that filament is loaded into the filament drawer correctly. Change filament using the **Filament** menu. When loading new filament, clip off the end, making a pointed tip to prevent clogs in your extruder.