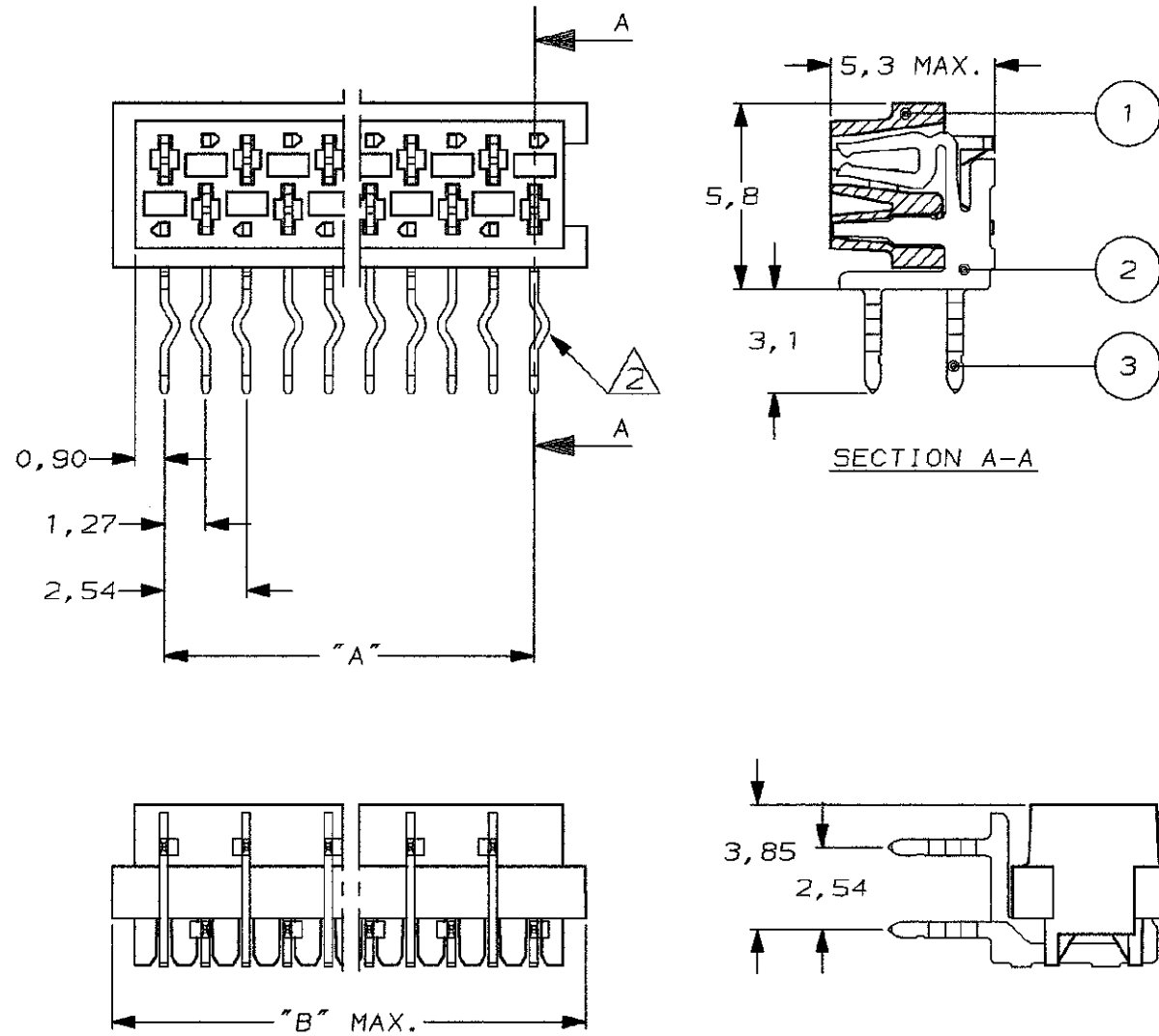


NOTES:

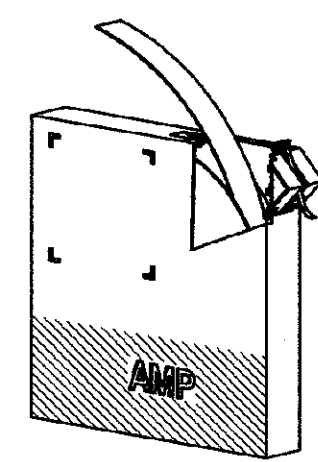
- ① THIS AREA IS RESERVED FOR CONTACTS
- ② DIRECTION OF KINK OPTIONAL.



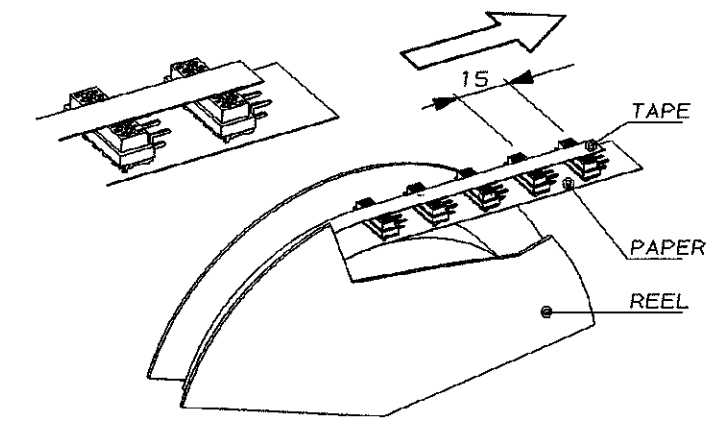
DO NOT SCALE METRIC  
DIMENSIONS IN mm



PARTNUMBERS BOX PACKAGING	PARTNUMBERS REEL PACKAGING	NUMBER OF POSITIONS	"A"	"B"
7-215460-4	0-215460-4	4	3,81	7,1
7-215460-6	0-215460-6	6	6,35	9,7
7-215460-8	0-215460-8	8	8,89	12,2
8-215460-0	1-215460-0	10	11,43	14,7
8-215460-2	1-215460-2	12	13,97	17,3
8-215460-4	1-215460-4	14	16,51	19,8
8-215460-6	1-215460-6	16	19,05	22,4
8-215460-8	1-215460-8	18	21,59	24,9
9-215460-0	2-215460-0	20	24,13	27,4

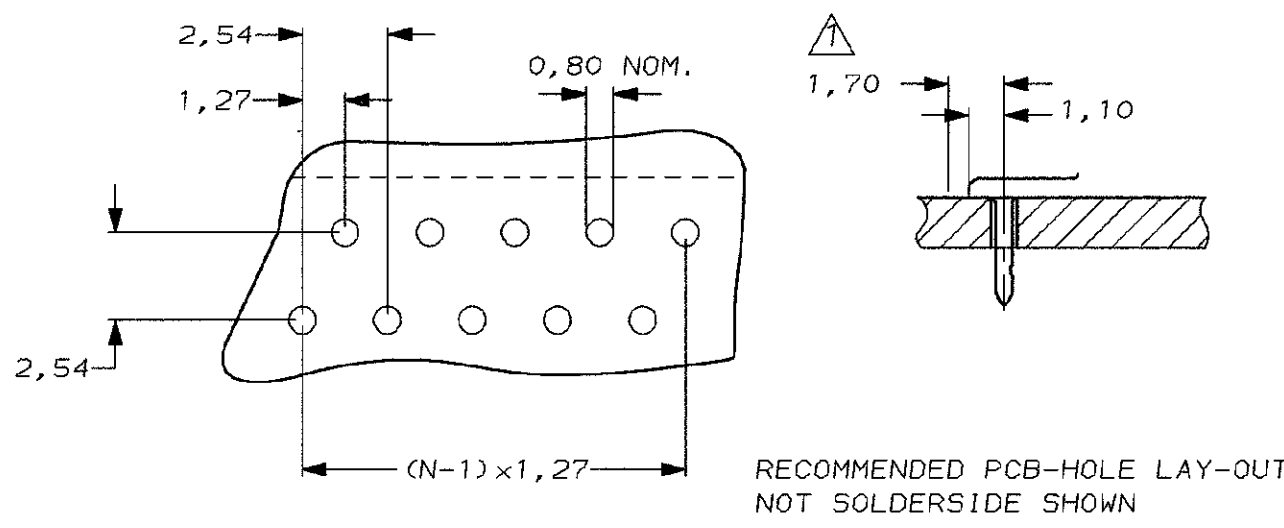


BOX PACKAGING  
250 CONNECTORS PER BOX  
FOR ALL PARTNUMBERS.



REEL PACKAGING  
DEREELING DIRECTION AND CONNECTOR POSITION  
2500 CONNECTORS PER REEL FOR ALL PARTNUMBERS

DESCRIPTION	MATERIAL	ITEM
FEMALE CONTACT	PhBr. PLATING; TIN-LEAD	3
FEMALE CONTACT	PhBr. PLATING; TIN-LEAD	2
HOUSING	GLASS FILLED POLYESTER (RED)	1



**CUSTOMER DRAWING** FOR REFERENCE ONLY WILL NOT BE UPDATED

© COPYRIGHT 19- BY AMP-HOLLAND B.V.  
ALL INTERNATIONAL RIGHTS RESERVED. AMP PRODUCTS MAY BE COVERED BY U.S. AND FOREIGN AND/OR PATENTS PENDING.  
THIS DRAWING IS UNPUBLISHED  
RELEASED FOR PUBLICATION

**AMP** | AMP-HOLLAND B.V.  
's-Hertogenbosch,  
The Netherlands.

NAME: **Micro-MaTch FEMALE ON BOARD**  
SIDE ENTRY POLARIZED

DR.: P. V. TONGEREN	CHK.: H. KOKKEN	APP.: L.V. SOEST	DWG. No.	REV. LTR.	SHEET
DATE: 11-03-92	DATE: 11-03-92	DATE: -	215460	R	1 OF 1