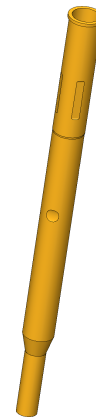


Receptacle  
**KS-112 35**  
Item KS-11235



**ingun**<sup>®</sup>  
Partner for Future Technology

**INGUN SELECTION**



1:1

# Receptacle

## KS-112 35

Item KS-11235



GO TO PRODUCT

ingun®

Partner for Future Technology

### General data

Product group	Receptacles (KS)
Series	KS-112
Sub-series	KS-112 press-in version
Type of receptacle connection	Plug / open
Press ring	No
Surface area	Gold
Collar diameter	2.2 mm [.086 in]
Collar height	0.2 mm [.007 in]
Knurl	No
Vacuum-tight	No
RoHS-compliant	Yes

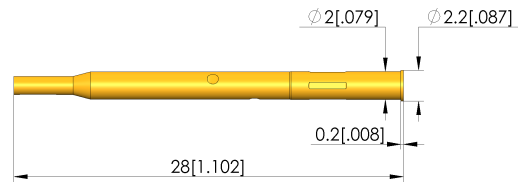
### Mounting hole

Mounting hole in CEM1	1.98 - 2.00 mm [.077 - .078 in]
Mounting hole in FR4	1.99 - 2.01 mm [.078 - .079 in]

### Mechanical data

Total length	28 mm [1.10 in]
Outer diameter	2 mm [.078 in]

### INGUN SELECTION



### INGUN Prüfmittelbau GmbH

Max-Stromeyer-Straße 162  
78467, Constance, Germany  
Phone +49 7531 8105-0  
Customer hotline +49 7531 8105-888  
Fax +49 7531 8105-65  
info@ingun.com



Prices and delivery times on request.  
Technical changes reserved. 11/22 EN

Weitere Informationen zum Thema  
Test probes

