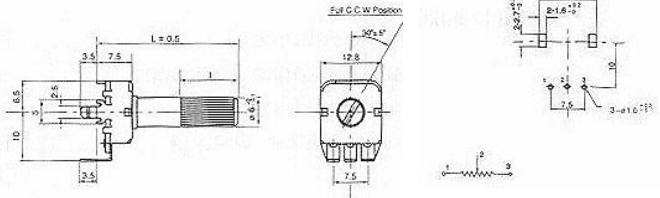


INSULATED SHAFT ROTARY POTENTIOMETER

Q-4540

F-124K

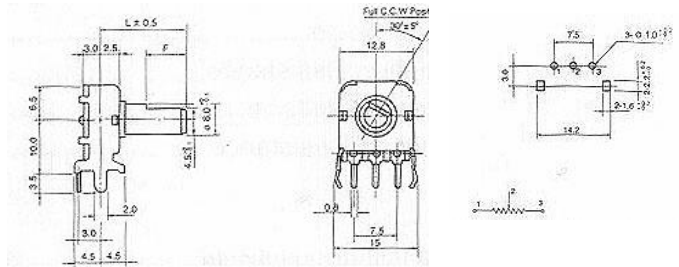
Horizontal Type, Single Unit,
P.C.B. Terminal



Q-4542

F-124KP

Vertical Type, Single Unit,
P.C.B. Terminal



SPECIFICATIONS

Electrical Characteristics

- Total Resistance..... 1 K Ω ~500 K Ω
- Total Resistance Tolerance \pm 20%
- Resistance Taper.....A,B,C,D, See P81
- Max. Operation Voltage Linear Taper B : AC 150 V. Other Tapers : AC 100V
- Rated Power.....Linear Taper B : 0.08 W, Other Tapers : 0.04 W
- Sliding Noise.....Less than 100 mV
- Insulation Resistance More than 50 M Ω at DC 500 V
- Withstand Voltage.....1 minute at AC 500 V
- Residual ResistanceTerm. 1~2: Less than 20 Ω
Term. 2~3: Less than 20 Ω

Mechanical Characteristics

- Total Rotational Angle300° \pm 5°
- Rotational Torque.....20 gf.cm ~ 200 gf.cm
- Rotational Stopper Strength...3.0 Kg.f.cm Min
- Push-Pull Strength8.0 Kg.f Min

Durability

- Rotational Life 10,000 Cycles