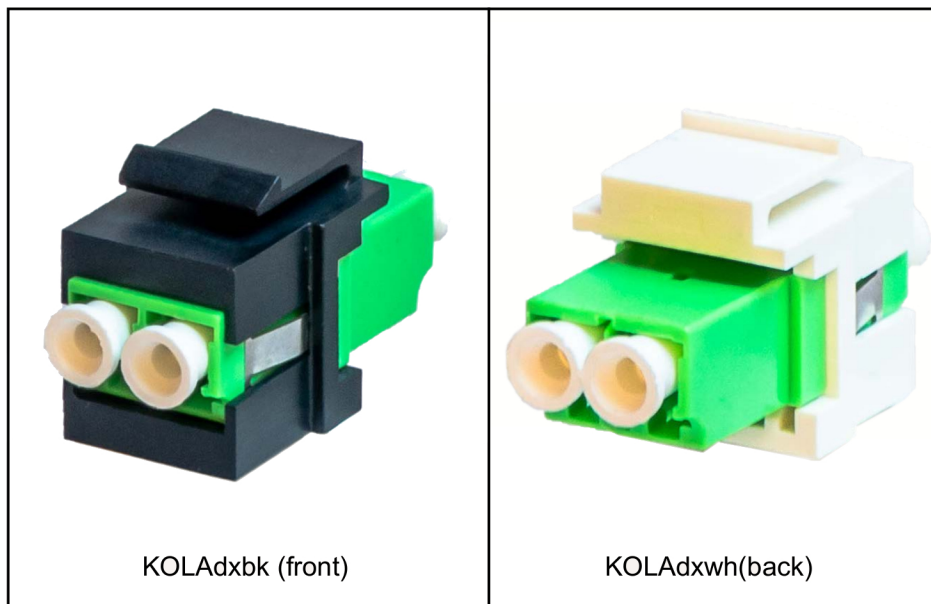


LC APC keystone



LC APC Keystone Coupler/Adaptor (KOLAdxwh/bk)

This LC APC keystone coupler/adaptor can be used for easy snap-in mounting in a keystone patch panel, faceplate or surface-mount box. The compact design allows fitting 24 or even 48 into a 1U keystone patch panel. LC APC enables significantly reduced noise by comparison with standard LC connections

Features

- LC Angled Physical Connector (APC) to LC APC single-mode duplex – also suitable for use in multi-mode installations
- Female to female keystone coupler/adaptor, designed to fit industry standard keystone outlets and patch panels
- Low profile, high density design suitable for 24 or 48 per 1U panel
- Single piece robust LC APC moulding
- Suitable for high performance LC APC installations – see images below for details
- Black and white versions available to match panel or faceplate colour
- Also available in Panel Mount or D UNIVERSAL XLR type versions

Specifications

- Net weight (Approx): **KOLAdxwh/bk** - 4.5g; **KOLAdxpm** - 14.2g; **KOLAdxDpm** - 6.8g
- Dimensions (without dust covers): **KOLAdxbk/wh** - 21 x 18 x 37 mm; **KOLAdxpm** - 35 x 19 x 37mm; **KOLAdxDpm** - 35 x 26 x 37 mm
- Colour: **KOLAdxbk** - green/white/black; **KOLAdxwh** - green/white; **KOLAdxpm** - silver/green/white; **KOLAdxDpm** - black/green/white

Materials

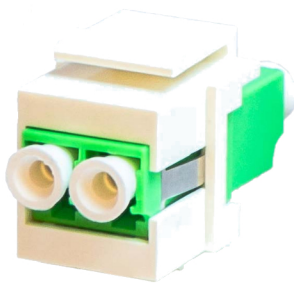
- Keystone housing: ABS UL94V-0
- LC body - Polyetherimide (PEI)
- Alignment sleeves – ZrO₂

Packaging: in individual poly bag then in bags of 20

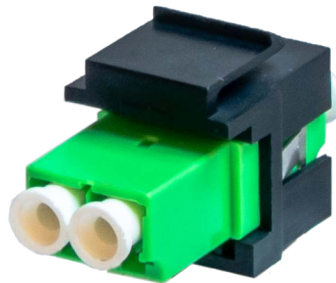
Commodity code: 85177090

County of origin: KOLAdxbk and KOLAdxwh: China
KOLAdxpm and KOLAdxDpm: UK

EAN Numbers: KOLAdxbk - 5055386509338; KOLAdxwh - 5055386509345;
KOLAdxpm - 5055386509352; KOLAdxDpm - 5055386509369



KOLAdxwh (front)



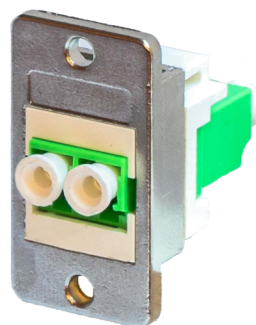
KOLAdxbk (back)



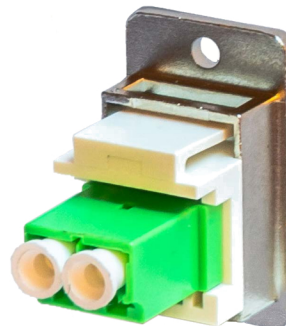
KOLAdxDpm (front)



KOLAdxDpm (back)



KOLAdxpm (front)



KOLAdxpm (back)

Angled Physical Contact Connector



Connector Polish	Nominal Reflectance (dB)	Nominal Reflectance (%)
FLAT	-20 dB	1%
PC	-40 dB	0.01%
UPC	-50 dB	0.001%
APC	-60 dB or higher	0.0001%

Source – PPC/Belden