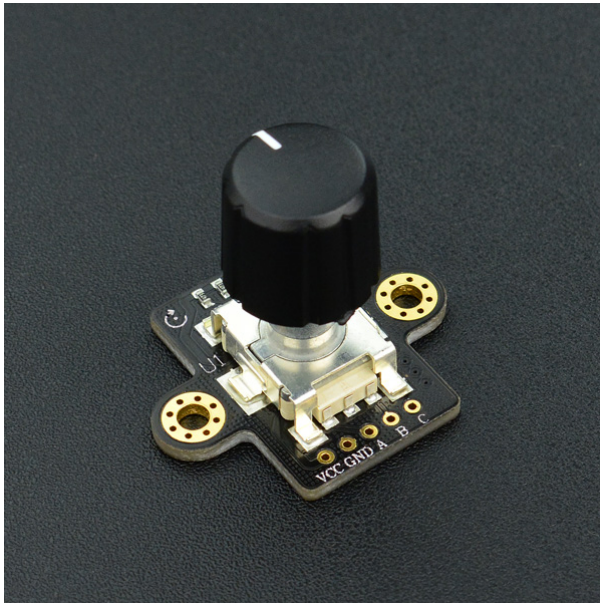


# EC11 Rotary Encoder Module SKU SEN0235



(<https://www.dfrobot.com/category-203.html>)

## Introduction

---

DFRobot 360 degree rotary encoder module is designed based on EC11 rotary encoder button. This module has three signal terminals: terminal A & B is encoder output; terminal C is button signal output. It is very suitable for applications such as volume knob, lighting adjustment. The rotary encoder module comes with XH2.54 bonding pad, easy to be used in prototyping projects, like automotive electronics, multimedia speakers, instrumentation, smart home and other fields.

## Specification

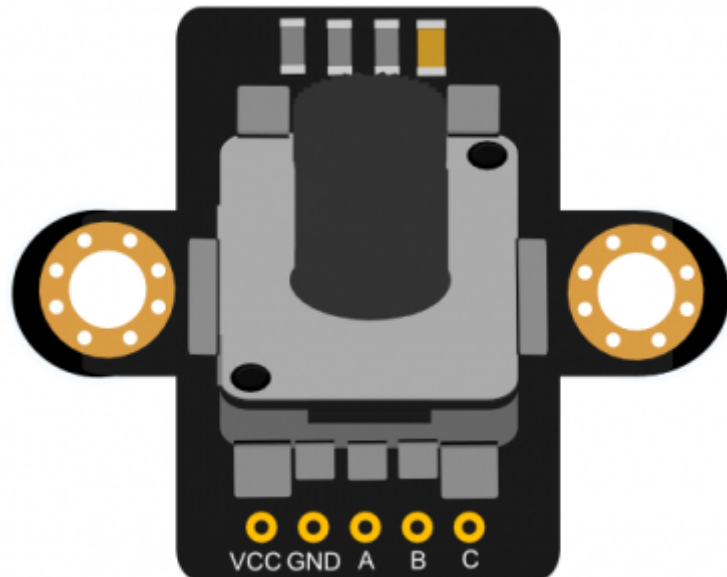
## Specification

---

- Operating Voltage: 3.3V ~ 5V
- Full Rotation Angle: 360 degrees (no stop point)
- Number of pulse: 15
- Rotation Life: 30000 ± 200 Cycles
- Contact Resistance: ≤ 100mΩ
- Insulation Resistance: 100MΩ or more
- Oscillation: <10ms Press
- Working Temperature: -30 °C ~ 80 °C
- Module Size: 33.8 \* 22.4 (mm) /1.3 \* 1.1 (inches)
- Weight: 14g

## Board Overview

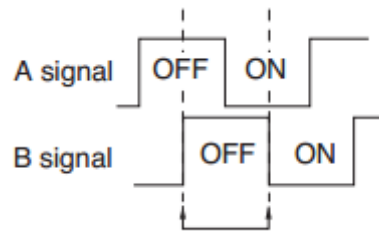
---



Num	Label	Description
-----	-------	-------------

1	VCC	3.3~5V
2	GND	GND
3	A	Encoder-phase A
4	B	Encoder-phase B
5	C	Button

CW Direction: phase A B signal:



## Tutorial

---

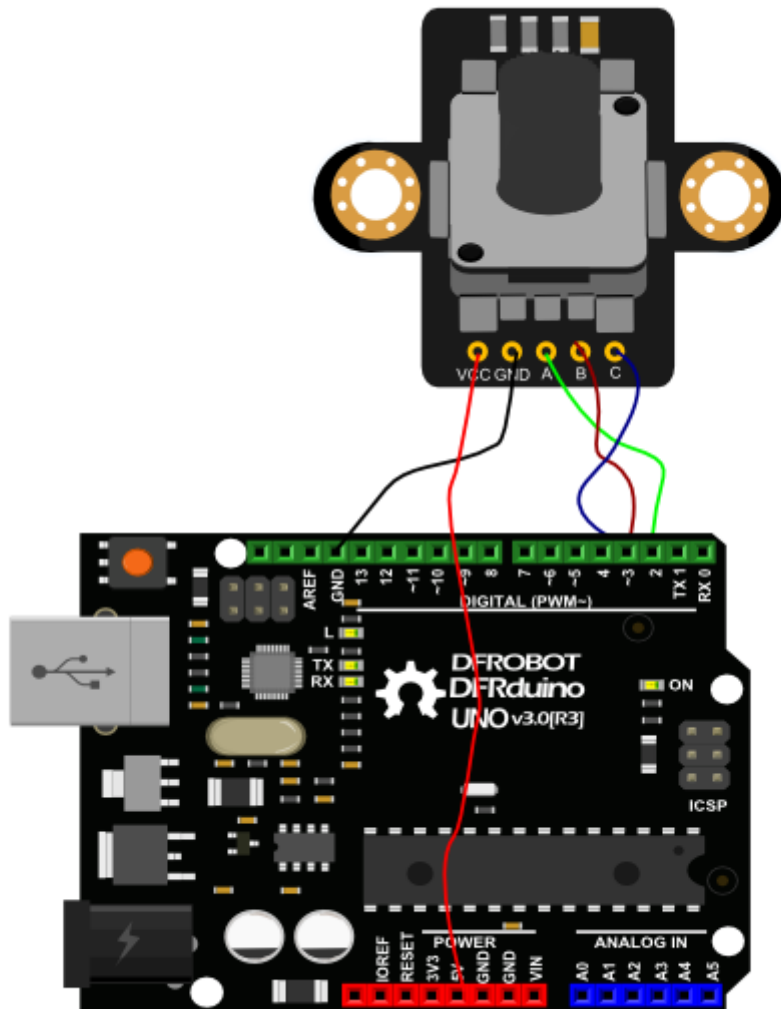
### Requirements

- Hardware
  - DFRduino UNO (or similar) x 1
  - XXX x #
  - M-M/F-M/F-F Jumper wires

- Software

- Arduino IDE (Version requirements: V1.6.?), [<https://www.arduino.cc/en/Main/Software> (<https://www.arduino.cc/en/Main/Software>)]  
Click to Download Arduino IDE from Arduino®]

## Connection Diagram



## Sample Code

```
int encoderPinA = 2;
int encoderPinB = 3;
int buttonPin = 4;

volatile int lastEncoded = 0;
volatile long encoderValue = 0;

long lastencoderValue = 0;

int lastMSB = 0;
int lastLSB = 0;

long readEncoderValue(void){
    return encoderValue/4;
}

boolean isButtonPushDown(void){
    if(!digitalRead(buttonPin)){
        delay(5);
        if(!digitalRead(buttonPin))
            return true;
    }
    return false;
}

void setup() {
    Serial.begin (9600);

    pinMode(encoderPinA, INPUT);
    pinMode(encoderPinB, INPUT);
    pinMode(buttonPin, INPUT);
```

```

digitalWrite(encoderPinA, HIGH); //turn pullup resistor on
digitalWrite(encoderPinB, HIGH); //turn pullup resistor on

//call updateEncoder() when any high/low changed seen

//on interrupt 0 (pin 2), or interrupt 1 (pin 3)
attachInterrupt(0, updateEncoder, CHANGE);
attachInterrupt(1, updateEncoder, CHANGE);

}

void loop(){
  //Do stuff here

  if(isButtonPushDown()){
    Serial.println("you push button down!!!");
  }
  Serial.println(readEncoderValue());
  delay(50); //just here to slow down the output, and show it will work even during a delay
}

void updateEncoder(){
  int MSB = digitalRead(encoderPinA); //MSB = most significant bit
  int LSB = digitalRead(encoderPinB); //LSB = least significant bit

  int encoded = (MSB << 1) | LSB; //converting the 2 pin value to single number
  int sum = (lastEncoded << 2) | encoded; //adding it to the previous encoded value

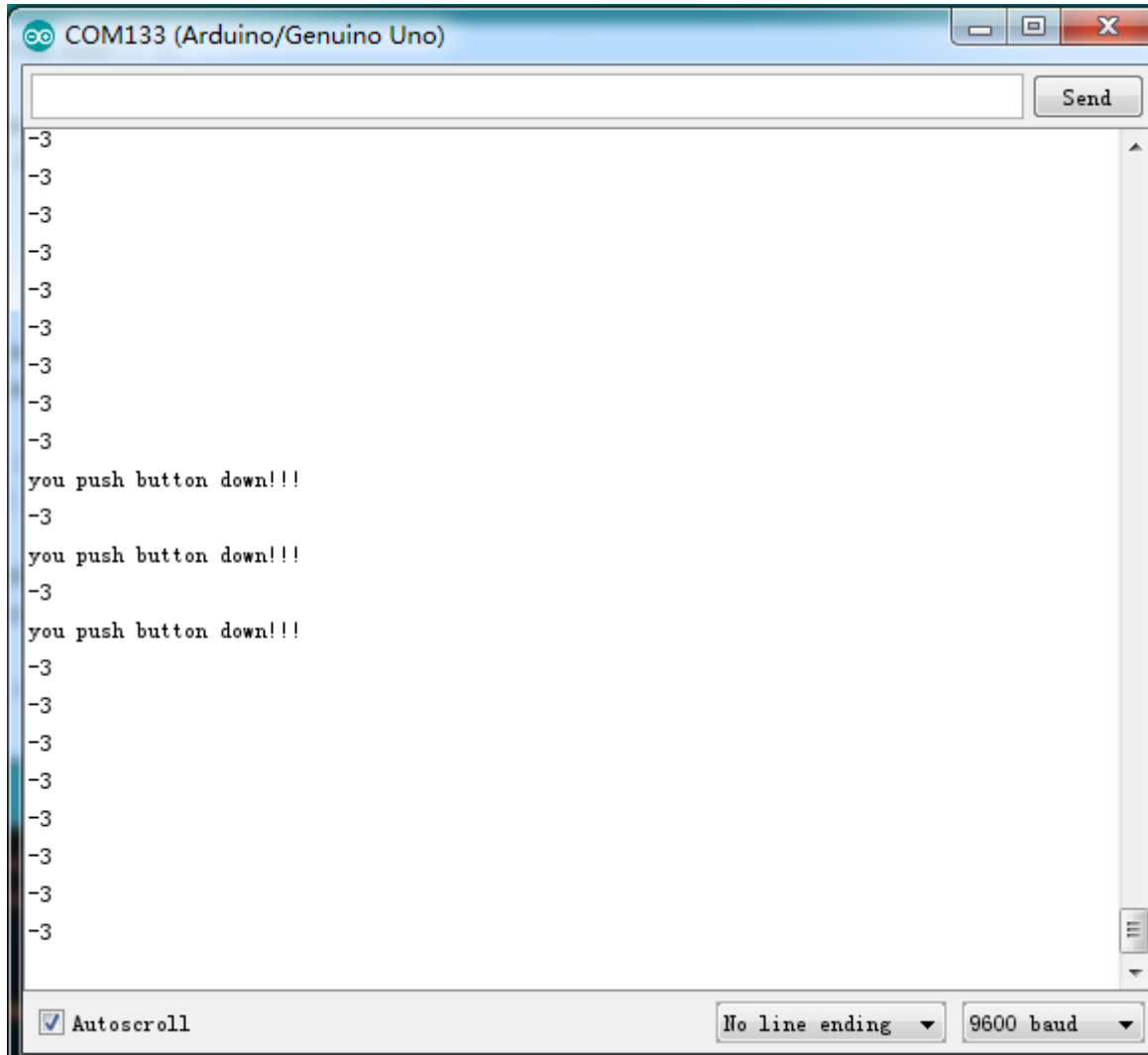
  if(sum == 0b1101 || sum == 0b0100 || sum == 0b0010 || sum == 0b1011) encoderValue  ;
  if(sum == 0b1110 || sum == 0b0111 || sum == 0b0001 || sum == 0b1000) encoderValue --;

  lastEncoded = encoded; //store this value for next time
}

```

## Expected Results

- 
- Clockwise Rotation: 1
- Anticlockwise Rotation: -1
- Press the Button: you push button down



## FAQ

---

For any questions, advice or cool ideas to share, please visit the **DFRobot Forum** (<https://www.dfrobot.com/forum/>).

## More Documents

---

- Schematic ([https://github.com/Arduinolibrary/DFRobot\\_SEN0235\\_EC11\\_Rotary\\_Encoder\\_Module/raw/master/EC11%20Rotary%20Encoder%20Module%20Schematic%20\\_V1.0\\_.pdf](https://github.com/Arduinolibrary/DFRobot_SEN0235_EC11_Rotary_Encoder_Module/raw/master/EC11%20Rotary%20Encoder%20Module%20Schematic%20_V1.0_.pdf))
- Dimension ([https://github.com/Arduinolibrary/DFRobot\\_SEN0235\\_EC11\\_Rotary\\_Encoder\\_Module/raw/master/EC11%20Rotary%20Encoder%20Module%20Dimension%20\\_V1.0\\_.pdf](https://github.com/Arduinolibrary/DFRobot_SEN0235_EC11_Rotary_Encoder_Module/raw/master/EC11%20Rotary%20Encoder%20Module%20Dimension%20_V1.0_.pdf))
- Datsheet ([https://github.com/Arduinolibrary/DFRobot\\_SEN0235\\_EC11\\_Rotary\\_Encoder\\_Module/raw/master/EC11I-152%20Datasheet.pdf](https://github.com/Arduinolibrary/DFRobot_SEN0235_EC11_Rotary_Encoder_Module/raw/master/EC11I-152%20Datasheet.pdf))



Get **EC11 Rotary Encoder Module\_SKU SEN0235** (<https://www.dfrobot.com/category-203.html>) from DFRobot Store or **DFRobot Distributor**. (<https://www.dfrobot.com/index.php?route=information/distributorslogo>)

**Turn to the Top**