

# XMLA004A2C11

pressure switch XMLA 4 bar - fixed scale 1  
threshold - 1 C/O



## Main

|   |  |
|---|--|
| Range of product  | OsiSense XM  |
| Product or component type                               | Electromechanical pressure sensor  |
| Pressure sensor type                                    | Electromechanical pressure sensor  |
| Device short name                                       | XMLA   |
| Pressure sensor size                                    | 4 bar  |
| Controlled fluid  | Air (0...70 °C)<br>Fresh water (0...70 °C)<br>Hydraulic oil (0...70 °C)  |
| Fluid connection type                                   | G 1/4 (female) conforming to ISO 228   |
| Electrical connection                                   | 1 male connector EN 175301-803-A (ex DIN43650)<br>4 pins   |
| Contacts type and composition                           | 1 C/O  |
| Product specific application                            | -  |
| Pressure switch type of operation                       | Detection of 1 single threshold  |
| Electrical circuit type                                 | Control circuit  |
| Scale type  | Fixed differential   |
| Local display   | With   |
| Adjustable range of switching point on rising pressure  | 0.4...4 bar  |
| Adjustable range of switching point on falling pressure | 0.05...3.65 bar  |
| Maximum permissible accidental pressure                 | 9 bar  |
| Destruction pressure                                    | 18 bar   |
| Pressure actuator                                       | Diaphragm  |
| Materials in contact with fluid                         | FPM, FKM<br>Zinc alloy   |
| Enclosure material                                      | Zinc alloy   |
| [In] rated current                                      | 3 A, B300, AC-15 (Ue = 120 V) conforming to EN/IEC 60947-5-1<br>1.5 A, B300, AC-15 (Ue = 240 V) conforming to EN/IEC 60947-5-1<br>0.1 A, R300, DC-13 (Ue = 250 V) conforming to EN/IEC 60947-5-1 |

## Complementary

|  |   |
|--|---|
| Natural differential at low setting      | 0.35 bar (+/- 0.03 bar)   |
| Natural differential at high setting     | 0.35 bar (+/- 0.03 bar)   |
| Maximum permissible pressure - per cycle | 5 bar   |
| Operating rate                           | <= 120 cyc/mn at > 0 °C   |
| Repeat accuracy                          | < 2 %   |
| [Ui] rated insulation voltage            | 300 V conforming to UL 508<br>500 V conforming to EN/IEC 60947-1<br>300 V conforming to CSA C22.2 No 14 |
| [Uimp] rated impulse withstand voltage   | 6 kV conforming to EN/IEC 60947-1   |

The information provided in this documentation contains general descriptions and/or technical characteristics of the performance of the products contained herein. This documentation is not intended as a substitute for and is not to be used for determining suitability or reliability of these products for specific user applications. It is the duty of any such user or integrator to perform the appropriate and complete risk analysis, evaluation and testing of the products with respect to the relevant specific application or use thereof. Neither Schneider Electric Industries SAS nor any of its affiliates or subsidiaries shall be responsible or liable for misuse of the information contained herein.

|                              |  |
|------------------------------|--|
| Auxiliary contacts operation | Snap action  |
| Contacts material            | Silver contacts  |
| Resistance across terminals  | < 25 mOhm conforming to IEC 255-7 category 3<br>< 25 mOhm conforming to NF C 93-050 method A |
| Short circuit protection     | 10 A cartridge fuse type gG (gl)   |
| Mechanical durability        | 8000000 cycles   |
| Setting                      | External   |
| Height                       | 113 mm   |
| Depth                        | 75 mm  |
| Width                        | 35 mm  |
| Product weight               | 0.715 kg   |

## Environment

|  |  |
|--|--|
| Standards                                  | CE<br>EN/IEC 60947-5-1<br>UL 508<br>CSA C22.2 No 14  |
| Product certifications                     | BV<br>CCC<br>CSA<br>LROS (Lloyds register of shipping)<br>UL<br>EAC                                  |
| Protective treatment                       | TC (standard version)  |
| Ambient air temperature for operation      | -25...70 °C  |
| Ambient air temperature for storage        | -40...70 °C  |
| Operating position                         | Any position   |
| Vibration resistance                       | 4 gn (f = 30...500 Hz) conforming to IEC 60068-2-6   |
| Shock resistance                           | 50 gn conforming to IEC 60068-2-27   |
| Class of protection against electric shock | Class I conforming to IEC 1140<br>Class I conforming to IEC 536<br>Class I conforming to NF C 20-030 |
| IP degree of protection                    | IP65 conforming to EN/IEC 60529  |

## Offer Sustainability

|                                  |   |
|----------------------------------|---|
| Sustainable offer status         | Green Premium product   |
| RoHS (date code: YYWW)           | Compliant - since 0928 - <a href="#">Schneider Electric declaration of conformity</a> |
| REACH                            | Reference not containing SVHC above the threshold                                     |
| Product end of life instructions | Need no specific recycling operations   |

Dimensions



- (1) 1 fluid entry, tapped G1/4 (BSP female)
- (2) EN 175301-803-A connector
- Ø : 2 elongated holes Ø 5.2 x 6.7

---

Wiring Diagram

---

Terminal Model

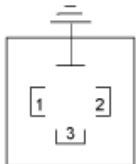


---

Wiring Diagram

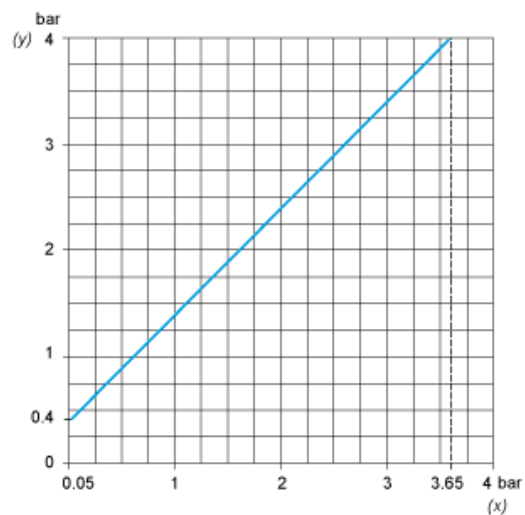
---

Vacuum Switch Connector Pin View

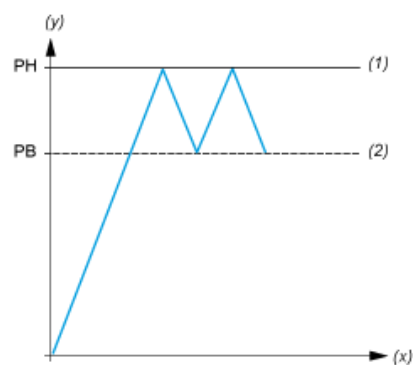


- (1) 11 and 13
- (2) 12
- (3) 14

Operating Curves



- (y) Rising pressure
- (x) Falling pressure



- (y) Pressure
- (x) Time
- (1) Adjustable value
- (2) Non adjustable value
- PH : High point
- PB : Below point